

CONTRACTOR 2017



gambini group
industrie ceramiche



NATURAMENTE
italiano



INDICE/ INDEX

			
Pavimento. Floor tiles. Carrelages de sol. Bodenfliesen.	Rivestimento. Wall tiles. Carrelages de mur. Wandfliesen.	Bagni. Bathroom. Salles de bain. Badezimmer.	Cucine. Kitchen. Cusines. Küchenbereich.
			
Interno. Inside. Intérieur. Innen.	Esterno. Outside. Extérieur. Außerhalb.	Facile da pulire. Easy to clean. Facile à nettoyer. Einfach zu säubern.	Resistenza chimica. Chemical resistance. Résistance chimique. Kemicalienbeständigkeit.
			V Aspetto della superficie Surface appearance Aspect de la surface Oberflächenaussehen
Resistenza al gelo. Frost resistance. Résistance au gel. Frostwiderständigkeit.	Resistenza alle macchie. Resistance to staining. Résistance aux taches. Fleckenbeständigkeit.	Resistenza allo scivolamento (coefficiente di attrito). Slip resistance (coefficient of friction). Résistance au glissement (coefficient de friction). Rutschwiderstand (reibungskoeffizient).	V1 → V2 Aspetto uniforme Uniform appearance Aspect uniforme Gleichartiges Aussehen
	R		V3 → V4 Variazione moderata Moderate variation Variation modérée Gemäßigte Variation
Spessore. Thickness. Épaisseur. Stärke.	Rettificato. Rectified. Rectifié. Rektifiziert		Variazione sostanziale Substantial variation Variation substantielle Wesentliche Variation
g	pic		
Gres porcellanato smaltato. Glazed porcelain. Gres cerame émaillé. Glasierte Feinsteinzeug.	Gres porcellanato impasto colorato. Coloured body porcelain stoneware. Grès cerame colorée dans la masse. Feinsteinzeug, Gefärbte Ton.		
b			
Bicottura per rivestimento. Double firing for wall tiles. Bicuisson pour carrelages de mur. Zweibrand für Wandfliesen.			

FLOOR

19x80:	
MEGEVE	pag. 6
SALT LAKE	pag. 10
SESTRIERES	pag. 14
SHERWOOD	pag. 18
VOLGA	pag. 22
33,5x71:	
DOLE	pag. 26
ROBERTO	pag. 30
STONE_1	pag. 32
WALLY	pag. 40
30x60,3 / 30x60:	
ARDENNES	pag. 42
CAVALLO	pag. 44
EMILIA	pag. 46
GARDEN	pag. 48
PUNTO	pag. 50
ROCK	pag. 52
ROY	pag. 54
SASSUOLO MODENA	pag. 55
URBAN DEEP	pag. 55
URBAN SILK	pag. 56
60x60:	
LOUVIO	pag. 60
45,5x45,5:	
CHALET	pag. 62
PAVÈ	pag. 64
VIEW MINERAL	pag. 66
33x50:	
LIVING	pag. 68
33x33 / 32,5x32,5:	
ARIZONA	pag. 72
CORTE	pag. 73
FORNACI	pag. 74
GRAN DUCATO	pag. 75
PONT DU GARD	pag. 76
UMBRIA	pag. 78
VELA	pag. 79

FLOOR

MULTIFORMATI:	
ABBAZIE	pag. 80
ARAGON	pag. 82
ASIAGO	pag. 84
ART DÉCO	pag. 86
BONNIEUX	pag. 92
QUARZITE	pag. 94
TIMES SQUARE	pag. 98

WALL

25x60:	
DEVORÉ	pag. 106
DRAMA	pag. 110
VANGOG	pag. 112
20x50,2 / 20x50:	
LAQUE	pag. 114
LE VERNIS	pag. 118
LOFT BRILLANT	pag. 122
ONDA	pag. 126
SALENTO	pag. 128
SATIN	pag. 130
25x45 / 25x40:	
EXPO	pag. 134
FIRENZE	pag. 135
20x40:	
LE VERNIS	pag. 136
MELBOURNE	pag. 138
MOIRÈ	pag. 142
ROMA	pag. 146
SETA	pag. 148
TIMES SQUARE	pag. 150
TINTE UNITE	pag. 154
VELVET	pag. 156
VITTORIA	pag. 160
VOLUPTÉ	pag. 161

CONDIZIONI GENERALI DI VENDITA pag. 162
 CONSIGLI E INDICAZIONI TECNICHE pag. 165

Floor



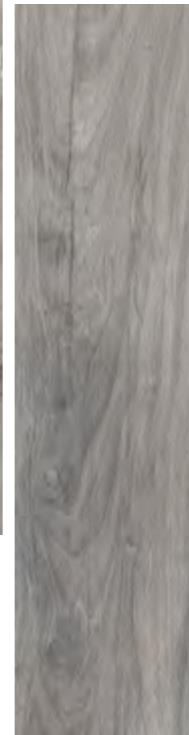
MEGEVE 19x80



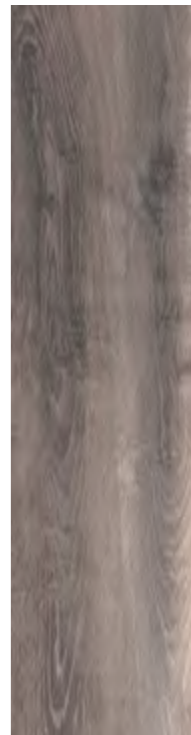
19x80 Noce



19x80 Grigio



19x80 Noce



MEGEVE 19x80

MEGEVE 19x80



10mm



19x80 Miele



19x80 Beige

↓ PEZZI SPECIALI . SPECIAL PIECES
PIÈCES SPÉCIALES . FORMTEILE



BATTISCOPA
9,5x80

↓ IMBALLI E PESI . PACKING AND WEIGHTS .
EMBALLAGES ET POIDS . VERPACKUNG UND GEWICHTE

FORMATO SIZE . FORMAT . FORMAT	PCS	MQ	KG	BOX	KG
19x80	9	1,44	25,56	48	1246,88
9,5x80	20	-	-	-	-

MEGEVE 19x80



19x80 Beige

SALT LAKE 19x80



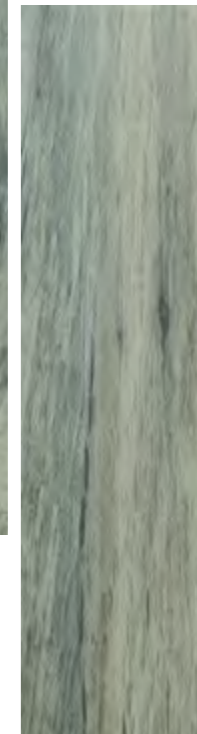
19x80 White



SALT LAKE 19x80



19x80 White
19x80 White Ext



19x80 Grey
19x80 Grey Ext

SALT LAKE 19x80



10mm



19x80 Red
19x80 Red Ext



19x80 Beige
19x80 Beige Ext

↓ PEZZI SPECIALI . SPECIAL PIECES
PIÈCES SPÉCIALES . FORMTEILE



BATTISCOPA
9,5x80

↓ IMBALLI E PESI . PACKING AND WEIGHTS .
EMBALLAGES ET POIDS . VERPACKUNG UND GEWICHTE

FORMATO SIZE . FORMAT . FORMAT	PCS	MQ	KG	BOX	KG
19x80 / 19x80 EXT	9	1,40	25,56	48	1246,88
9,5x80	20	-	-	-	-

SALT LAKE 19x80



19x80 Beige

SESTRIERES 19x80



SESTRIERES 19x80



SESTRIERES 19x80



19x80 Grigio



19x80 Grigio Rosa



19x80 Arancio



19x80 Bianco

↓ PEZZI SPECIALI . SPECIAL PIECES
PIÈCES SPÉCIALES . FORMTEILE



BATTISCOPIA
9,5x80

↓ IMBALLI E PESI . PACKING AND WEIGHTS .
EMBALLAGES ET POIDS . VERPACKUNG UND GEWICHTE

FORMATO SIZE . FORMAT . FORMAT	PCS	MQ	KG	BOX	KG
19x80	9	1,44	25,56	48	1246,88
9,5x80	20	-	-	-	-

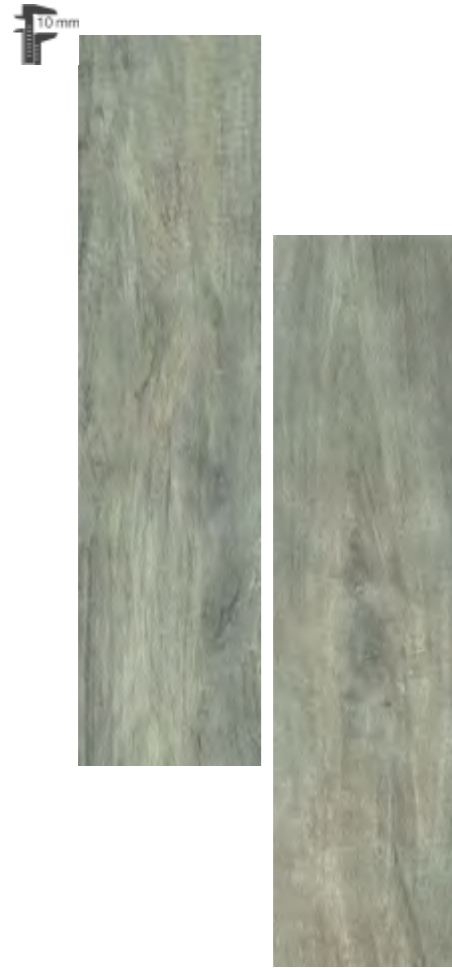
SHERWOOD 19x80



SHERWOOD 19x80



SHERWOOD 19x80



19x80 Lichen
19x80 Lichen Ext



19x80 Bianchi
19x80 Bianchi Ext



19x80 Sable
19x00 Sable Ext



19x80 Noisette
19x80 Noisette Ext

↓ PEZZI SPECIALI . SPECIAL PIECES
PIÈCES SPÉCIALES . FORMTEILE



BATTISCOPA
9,5x80

↓ IMBALLI E PESI . PACKING AND WEIGHTS .
EMBALLAGES ET POIDS . VERPACKUNG UND GEWICHTE

FORMATO SIZE . FORMAT . FORMAT	PCS	MQ	KG	BOX	KG
19x80	9	1,44	25,56	48	1246,88
9,5x80	20	-	-	-	-

VOLGA 19x80



19x80 Brun Doré



VOLGA 19x80



19x80 Brun Doré



19x80 Brun Claire



19x80 Brun Foncé

↓ PEZZI SPECIALI . SPECIAL PIECES
PIÈCES SPÉCIALES . FORMTEILE



BATTISCOPIA
9,5x80

↓ IMBALLI E PESI . PACKING AND WEIGHTS .
EMBALLAGES ET POIDS . VERPACKUNG UND GEWICHTE

FORMATO SIZE . FORMAT . FORMAT	PCS	MQ	KG	BOX	KG
19x80	9	1,44	25,56	48	1246,88
9,5x80	20	-	-	-	-

VOLGA 19x80



19x80 Brun Doré



VOLGA 19x80



19x80 Brun Doré



19x80 Brun Claire



19x80 Brun Foncé

↓ PEZZI SPECIALI . SPECIAL PIECES
PIÈCES SPÉCIALES . FORMTEILE



BATTISCOPA
9,5x80

↓ IMBALLI E PESI . PACKING AND WEIGHTS .
EMBALLAGES ET POIDS . VERPACKUNG UND GEWICHTE

FORMATO SIZE . FORMAT . FORMAT	PCS	MQ	KG	BOX	KG
19x80	9	1,44	25,56	48	1246,88
9,5x80	20	-	-	-	-

DOLE 35,5x71



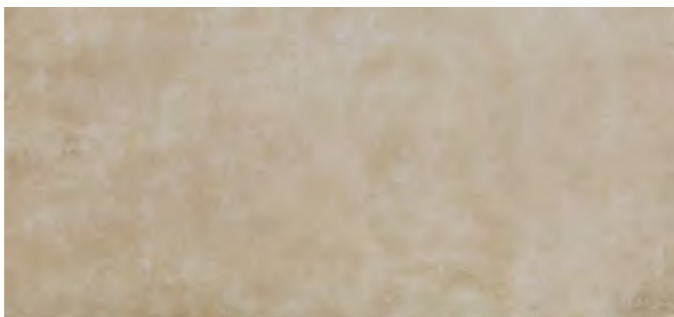
DOLE 35,5x71



35,5x71 Antracite



35,5x71 Gris



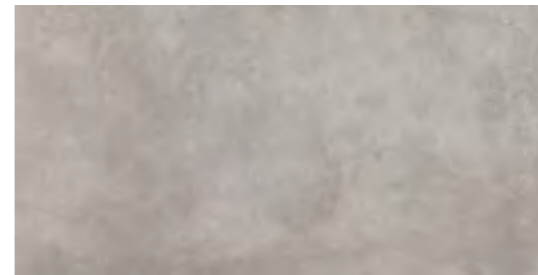
35,5x71 Beige



DOLE 30x60,3



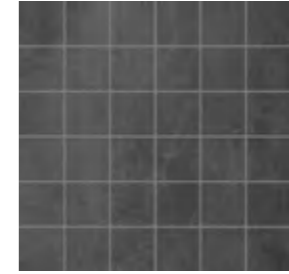
30x60,3 Antracite



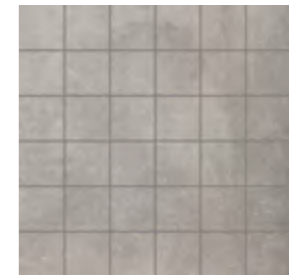
30x60,3 Gris



30x60,3 Beige



30x30 Mosaico 5x5 Antracite



30x30 Mosaico 5x5 Gris



30x30 Mosaico 5x5 Gris

↓ PEZZI SPECIALI . SPECIAL PIECES
PIÈCES SPÉCIALES . FORMTEILE



BATTISCOPIA
8,5x71

↓ IMBALLI E PESI . PACKING AND WEIGHTS .
EMBALLAGES ET POIDS . VERPACKUNG UND GEWICHTE

FORMATO SIZE . FORMAT . FORMAT	PCS	MQ	KG	BOX	KG
35,5x71	6	1,55	29,04	40	1181,60
30x60,3	9	1,66	26,55	48	1294,40
30x30 MOSAICO	11	1,00	-	30	-
8,5x71 BATTISCOPIA	10	-	-	-	-

ROBERTO 35,5x71



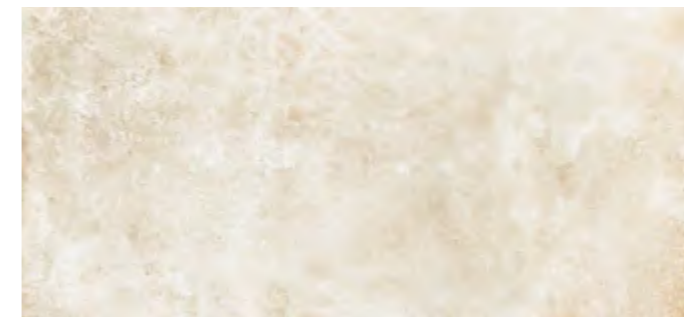
35,5x71 Noir



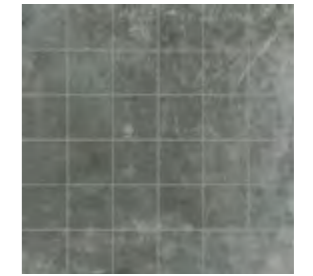
35,5x71 Noir



35,5x71 Gris



35,5x71 Sand



30x30 Mosaico 5x5 Noir



30x30 Mosaico 5x5 Gris



30x30 Mosaico 5x5 Sand

ROBERTO 35,5x71

↓ PEZZI SPECIALI . SPECIAL PIECES
PIÈCES SPÉCIALES . FORMTEILE



BATTISCOPIA
8,5x71

↓ IMBALLI E PESI . PACKING AND WEIGHTS .
EMBALLAGES ET POIDS . VERPACKUNG UND GEWICHTE

FORMATO SIZE . FORMAT . FORMAT	PCS	MQ	KG	BOX	KG
35,5x71	6	1,55	29,04	40	1181,60
30x30 MOSAICO	11	1,00	-	30	-
8,5x71 BATTISCOPIA	10	-	-	-	-

STONE1-PIETRA PIACENTINA 35,5x71



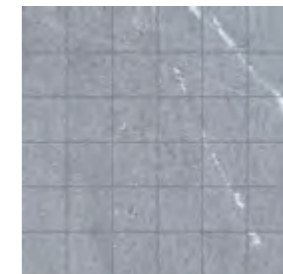
35,5x71



PIETRA PIACENTINA 35,5x71

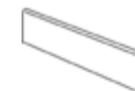


35,5x71



30x30 Mosaico 5x5

↓ PEZZI SPECIALI . SPECIAL PIECES
PIÈCES SPÉCIALES . FORMTEILE



BATTISCOPIA
8,5x71

↓ IMBALLI E PESI . PACKING AND WEIGHTS .
EMBALLAGES ET POIDS . VERPACKUNG UND GEWICHTE

FORMATO SIZE . FORMAT . FORMAT	PCS	MQ	KG	BOX	KG
35,5x71	6	1,55	29,04	40	1181,60
30x30 MOSAICO	11	1,00	-	30	-
8,5x71 BATTISCOPIA	10	-	-	-	-

STONE1-PIETRA SABBIA 35,5x71



35,5x71



PIETRA SABBIA 35,5x71

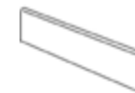


35,5x71



30x30 Mosaico 5x5

↓ PEZZI SPECIALI . SPECIAL PIECES
PIÈCES SPÉCIALES . FORMTEILE



BATTISCOPA
8,5x71

↓ IMBALLI E PESI . PACKING AND WEIGHTS .
EMBALLAGES ET POIDS . VERPACKUNG UND GEWICHTE

FORMATO SIZE . FORMAT . FORMAT	PCS	MQ	KG	BOX	KG
35,5x71	6	1,55	29,04	40	1181,60
30x30 MOSAICO	11	1,00	-	30	-
8,5x71 BATTISCOPA	10	-	-	-	-

STONE1-PIETRA LUNARE 35,5x71



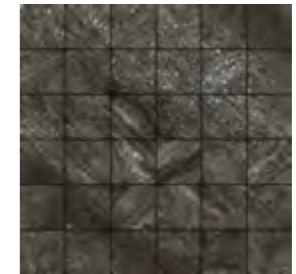
35,5x71 Nera



PIETRA LUNARE 35,5x71



35,5x71 Nera



30x30 Mosaico 5x5 Nera

↓ PEZZI SPECIALI . SPECIAL PIECES
PIÈCES SPÉCIALES . FORMTEILE



BATTISCOPIA
8,5x71

PIETRA LUNARE 35,5x71



35,5x71 Grigia



PIETRA LUNARE 35,5x71



35,5x71 Grigia



30x30 Mosaico 5x5 Grigia

↓ PEZZI SPECIALI . SPECIAL PIECES
PIÈCES SPÉCIALES . FORMTEILE



BATTISCOPA
8,5x71

↓ IMBALLI E PESI . PACKING AND WEIGHTS .
EMBALLAGES ET POIDS . VERPACKUNG UND GEWICHTE

FORMATO SIZE . FORMAT . FORMAT	PCS	MQ	KG	BOX	KG
35,5x71	6	1,55	29,04	40	1181,60
30x30 MOSAICO	11	1,00	-	30	-
8,5x71 BATTISCOPA	10	-	-	-	-

WALLY 35,5x71



35,5x71 Beige



35,5x71 Grigio



35,5x71 Noce



35,5x71 Beige

↓ PEZZI SPECIALI . SPECIAL PIECES
PIÈCES SPÉCIALES . FORMTEILE



BATTISCOPA
8,5x71

WALLY 35,5x71

↓ IMBALLI E PESI . PACKING AND WEIGHTS .
EMBALLAGES ET POIDS . VERPACKUNG UND GEWICHTE

FORMATO SIZE . FORMAT . FORMAT	PCS	MQ	KG	BOX	KG
35,5x71	6	1,55	29,04	40	1181,60
8,5x71 BATTISCOPA	10	-	-	-	-

ARDENNES 30x60



30x60 Light Grey



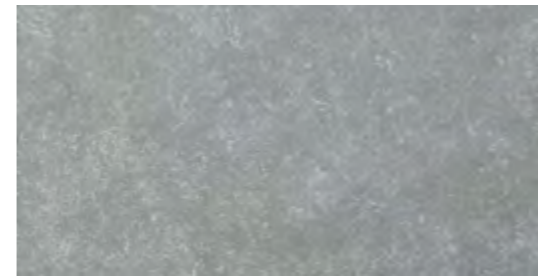
ARDENNES 30x60



30x60 Black



30x60 Dark Grey



30x60 Light Grey

↓ IMBALLI E PESI . PACKING AND WEIGHTS .
EMBALLAGES ET POIDS . VERPACKUNG UND GEWICHTE

FORMATO SIZE . FORMAT . FORMAT	PCS	MQ	KG	BOX	KG
30x60	7	1,26	23,10	48	1128,80
7x60 BATTISCOPA	20	-	-	-	-

CAVALLO 30x60



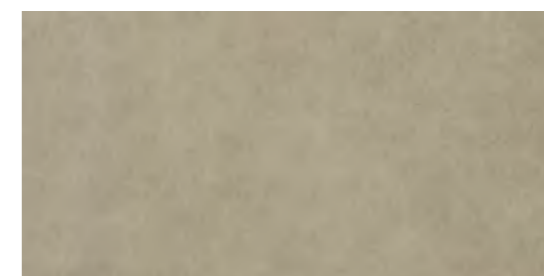
30x60 Argent



CAVALLO 30x60



30x60 Argent



30x60 Taupe

↓ PEZZI SPECIALI . SPECIAL PIECES
PIÈCES SPÉCIALES . FORMTEILE



BATTISCOPA
7x60

↓ IMBALLI E PESI . PACKING AND WEIGHTS .
EMBALLAGES ET POIDS . VERPACKUNG UND GEWICHTE

FORMATO SIZE . FORMAT . FORMAT	PCS	MQ	KG	BOX	KG
30x60	7	1,26	23,10	48	1128,80
7x60 BATTISCOPA	20	-	-	-	-

EMILIA 30x60



30x60 Moka
Rivestimento Coordinato 20x50,2 Satin Bianco



30x60 Moka



30x60 Antracite



30x30 Mosaico 5x5 Moka



30x30 Mosaico 5x5 Antracite



30x30 Mosaico Modulare Moka



30x30 Mosaico Modulare Antracite

↓ PEZZI SPECIALI . SPECIAL PIECES
PIÈCES SPÉCIALES . FORMTEILE



BATTISCOPIA
7x60

↓ IMBALLI E PESI . PACKING AND WEIGHTS .
EMBALLAGES ET POIDS . VERPACKUNG UND GEWICHTE

FORMATO SIZE - FORMAT . FORMAT	PCS	MQ	KG	BOX	KG
30x60	7	1,26	23,10	48	1128,80
30x30 MOSAICO 5x5	11	1,00	-	30	-
30x30 MOSAICO MODULARE	-	-	-	-	-
7x60 BATTISCOPIA	20	-	-	-	-

GARDEN 30x60,3



30x60,3 Cuio



GARDEN 30x60,3

8,5 mm



30x60,3 Cuio



30x60,3 Beige

↓ IMBALLI E PESI . PACKING AND WEIGHTS .
EMBALLAGES ET POIDS . VERPACKUNG UND GEWICHTE

FORMATO SIZE . FORMAT . FORMAT	PCS	MQ	KG	BOX	KG
30x60,3	9	1,66	26,55	48	1294,40

PUNTO 30x60,3



30x60 Gris Grip



PUNTO 30x60,3

F 8,5 mm



30x60,3 Gris
30x60,3 Gris Grip



30x60,3 Beige
30x60,3 Beige Grip

↓ IMBALLI E PESI . PACKING AND WEIGHTS .
EMBALLAGES ET POIDS . VERPACKUNG UND GEWICHTE

FORMATO SIZE . FORMAT . FORMAT	PCS	MQ	KG	BOX	KG
30x60,3 / 30x60,3 GRIP	9	1,66	26,55	48	1294,40

ROCK 30x60,3



30x60,3 Siberia



ROCK 30x60,3



30x60,3 Savana



30x60,3 Siberia



30x60,3 Forest

↓ IMBALLI E PESI . PACKING AND WEIGHTS .
 EMBALLAGES ET POIDS . VERPACKUNG UND GEWICHTE

FORMATO SIZE . FORMAT . FORMAT	PCS	MQ	KG	BOX	KG
30x60,3	9	1,66	26,55	48	1294,40

ROY 30x60,3



30x60,3 Gris



30x60,3 Noce
30x60,3 Noce Grip



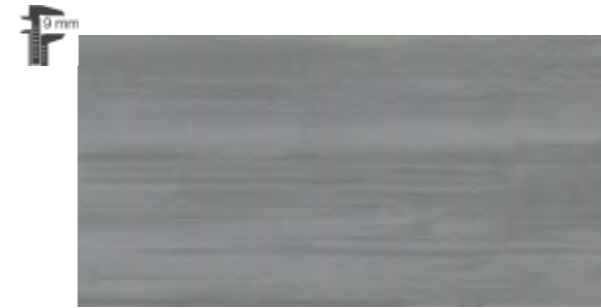
30x60,3 Beige
30x60,3 Beige Grip



↓ IMBALLI E PESI . PACKING AND WEIGHTS .
EMBALLAGES ET POIDS . VERPACKUNG UND GEWICHTE

FORMATO SIZE . FORMAT . FORMAT	PCS	MQ	KG	BOX	KG
30x60,3 / 30x60,3 GRIP	9	1,66	26,55	48	1294,40
7x60,3	20	-	-	-	-

SASSUOLO MODENA 30x60,3



30x60,3 Smoke

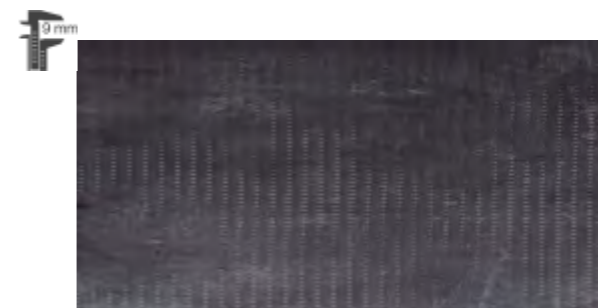


30x60,3 Grey

↓ IMBALLI E PESI . PACKING AND WEIGHTS .
EMBALLAGES ET POIDS . VERPACKUNG UND GEWICHTE

FORMATO SIZE . FORMAT . FORMAT	PCS	MQ	KG	BOX	KG
30x60,3	9	1,70	29,70	48	1353,60

URBAN DEEP 30x60



30x60 Antracite



30x60 Cemento



BATTISCOPA
9,5x60,3

↓ IMBALLI E PESI . PACKING AND WEIGHTS .
EMBALLAGES ET POIDS . VERPACKUNG UND GEWICHTE

FORMATO SIZE . FORMAT . FORMAT	PCS	MQ	KG	BOX	KG
30x60	8	1,44	25,12	48	1225,76
9,5x60,3 BATTISCOPA	12	-	-	-	-

URBAN SILK 30x60



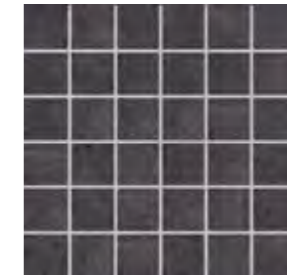
30x60 Cemento



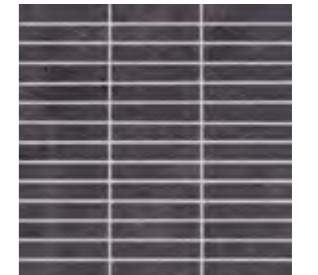
URBAN SILK 30x60



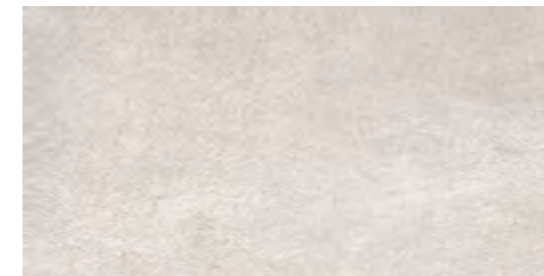
30x60 Antracite



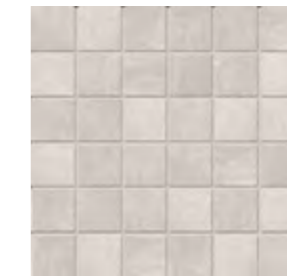
30x30 Mosaico 5x5
Antracite



30x30 Mosaico 2x10 Muretto
Antracite



30x60 Cemento



30x30 Mosaico 5x5
Cemento



30x30 Mosaico 2x10 Muretto
Cemento



5x30 Listello Cemento/Antracite

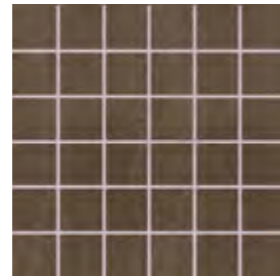
URBAN SILK 30x60



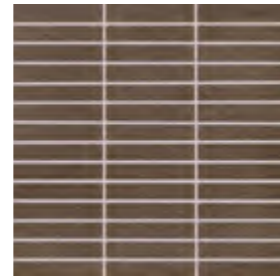
9 mm



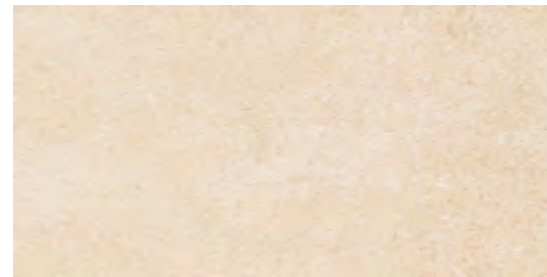
30x60 Mogano



30x30 Mosaico 5x5
Mogano



30x30 Mosaico 2x10 Muretto
Mogano



30x60 Avorio



30x30 Mosaico 5x5
Avorio



30x30 Mosaico 2x10 Muretto
Avorio



5x30 Listello Avorio/Mogano

↓ PEZZI SPECIALI . SPECIAL PIECES
PIÈCES SPÉCIALES . FORMTEILE



BATTISCOPA
9,5x60,3

↓ IMBALLI E PESI . PACKING AND WEIGHTS .
EMBALLAGES ET POIDS . VERPACKUNG UND GEWICHTE

FORMATO SIZE . FORMAT . FORMAT	PCS	MQ	KG	BOX	KG
30x60	8	1,44	25,12	48	1225,76
30x30 MOS. 5x5 - MOS. 2x10	11	1,00	-	30	-
5x30 LISTELLO	4	-	0,92	-	-
9,5x60,3 BATTISCOPA	12	-	-	-	-

URBAN SILK 30x60

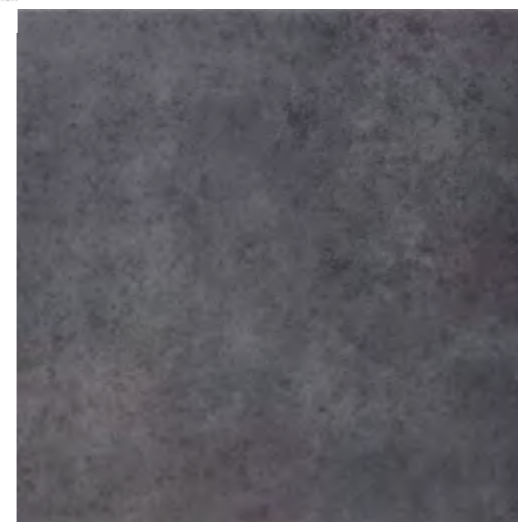


30x60 Mogano

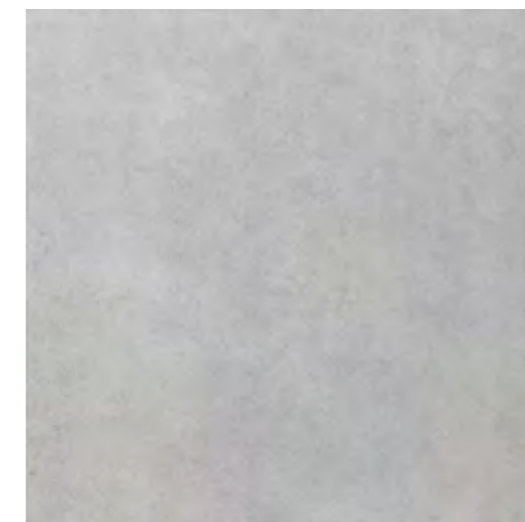
LOUVIO 60x60



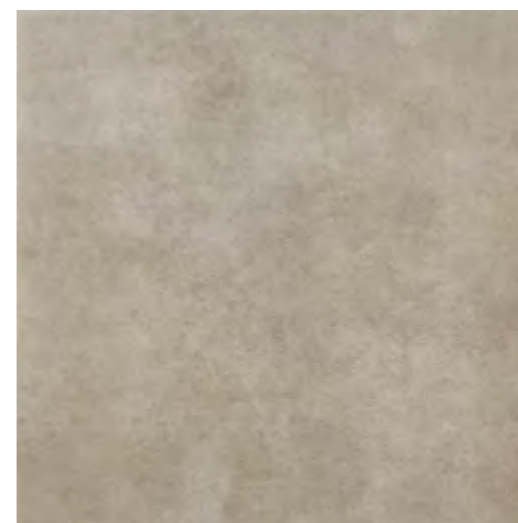
60x60 Gris



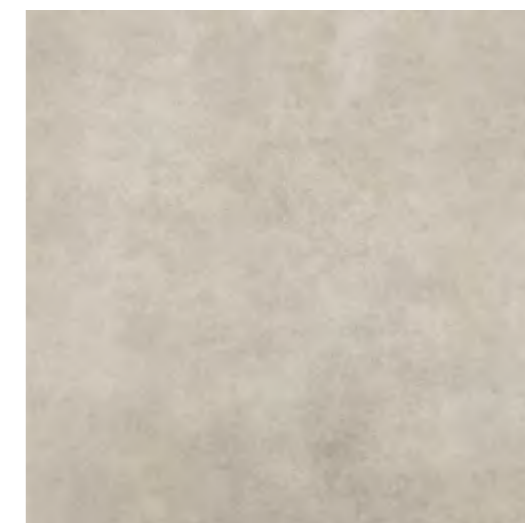
60x60 Anthracite



60x60 Gris



60x60 Taupe



60x60 Beige

↓ PEZZI SPECIALI . SPECIAL PIECES
PIÈCES SPÉCIALES . FORMTEILE



BATTISCOPIA
7x60

↓ IMBALLI E PESI . PACKING AND WEIGHTS .
EMBALLAGES ET POIDS . VERPACKUNG UND GEWICHTE

FORMATO SIZE . FORMAT . FORMAT	PCS	MQ	KG	BOX	KG
60x60	4	1,48	27,20	32	890,40
7x60 BATTISCOPIA	20	-	19,00	42	-

CHALET 45,5x45,5



45,5x45,5 Natural Oak



CHALET 45,5x45,5



45,5x45,5 Gris



45,5x45,5 Natural Oak

↓ PEZZI SPECIALI . SPECIAL PIECES
PIÈCES SPÉCIALES . FORMTEILE



BATTISCOPA
8,5x45,5

↓ IMBALLI E PESI . PACKING AND WEIGHTS .
EMBALLAGES ET POIDS . VERPACKUNG UND GEWICHTE

FORMATO SIZE . FORMAT . FORMAT	PCS	MQ	KG	BOX	KG
45,5x45,5	8	1,70	28,08	52	1480,16
8,5x45,5	20	-	-	-	-

PAVÈ 45,5x45,5



45,5x45,5 Blanc Ext



PAVÈ 45,5x45,5



45,5x45,5 Anthracite
45,5x45,5 Anthracite Ext



45,5x45,5 Gris
45,5x45,5 Gris Ext



45,5x45,5 Blanc
45,5x45,5 Blanc Ext



45,5x45,5 Cuio



45,5x45,5 Almond



45,5x45,5 Gold
45,5x45,5 Gold Ext

↓ IMBALLI E PESI . PACKING AND WEIGHTS .
EMBALLAGES ET POIDS . VERPACKUNG UND GEWICHTE

FORMATO SIZE . FORMAT . FORMAT	PCS	MQ	KG	BOX	KG
45,5x45,5 / 45,5x45,5 EXT	8	1,70	28,08	52	1434,40

VIEW MINERAL 45,5x45,5



45,5x45,5 View Mineral

↓ PEZZI SPECIALI · SPECIAL PIECES
PIECES SPECIALES · FORMTEILE



BATTISCOPA
8,5x45,5

↓ IMBALLI E PESI · PACKING AND WEIGHTS ·
EMBALLAGES ET POIDS · VERPACKUNG UND GEWICHTE

FORMATO SIZE · FORMAT · FORMAT	PCS	MQ	KG	BOX	KG
45,5x45,5	6	1,25	24,00	52	1268,00
8,5x45,5	20	-	-	-	-

VIEW MINERAL 45,5x45,5



45,5x45,5 View Mineral

LIVING 33x50



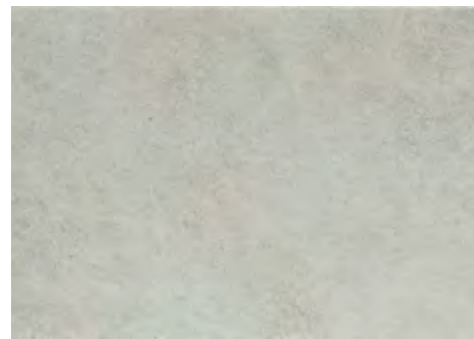
LIVING 33x50



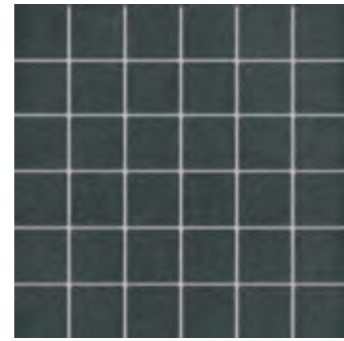
33x50 Antracite



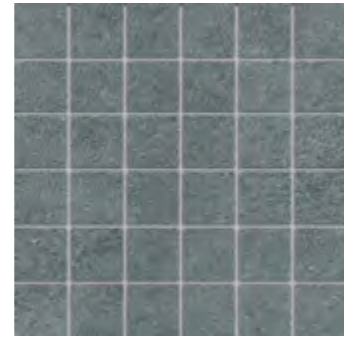
33x50 Grigio



33x50 Perla



33x33 Mosaico 5x5 Antracite



33x33 Mosaico 5x5 Grigio



33x33 Mosaico 5x5 Perla



33x50 Tabacco



33x50 Beige

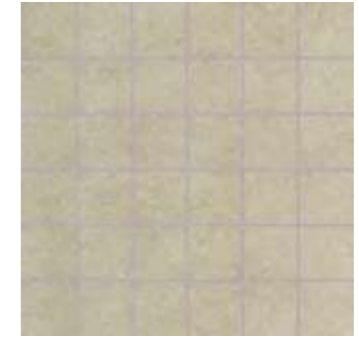


33x50 Almond

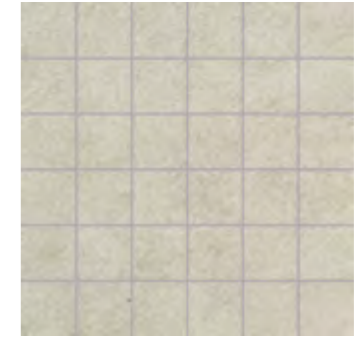
LIVING 33x50



33x33 Mosaico 5x5 Tabacco



33x33 Mosaico 5x5 Beige



33x33 Mosaico 5x5 Almond

↓ PEZZI SPECIALI / SPECIAL PIECES
PIECES SPÉCIALES / FORMEILE



BATTISCOPA
8x33
9x50

↓ IMBALLI E PESI . PACKING AND WEIGHTS .
EMBALLAGES ET POIDS . VERPACKUNG UND GEWICHTE

FORMATO SIZE / FORMAT / FORMAT	PCS	MQ	KG	BOX	KG
33x50	8	1,32	22,56	40	922,40
33x33 MOSAICO 5x5	9	1,00	14,85	30	263,00
8x33 BATTISCOPA	50	-	-	-	-
9x50 BATTISCOPA	20	-	-	-	-

ARIZONA 33x33



7,5 mm



33x33 Ocra



33x33 Beige

↓ PEZZI SPECIALI . SPECIAL PIECES
PIÈCES SPÉCIALES . FORMTEILE



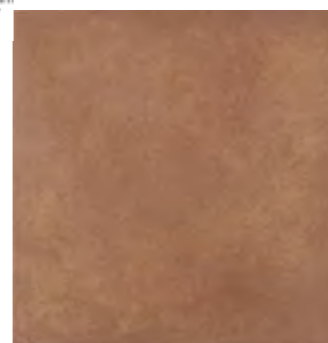
BATTISCOPA
7,5x33

↓ IMBALLI E PESI . PACKING AND WEIGHTS .
EMBALLAGES ET POIDS . VERPACKUNG UND GEWICHTE

FORMATO SIZE . FORMAT . FORMAT	PCS	MQ	KG	BOX	KG
33x33	14	1,50	22,54	46	1056,84
7,5x33 BATTISCOPA	50	-	-	-	-



8 mm



33x33 Cotto



33x33 Ocra

↓ PEZZI SPECIALI . SPECIAL PIECES
PIÈCES SPÉCIALES . FORMTEILE



BATTISCOPA
7,5x33

↓ IMBALLI E PESI . PACKING AND WEIGHTS .
EMBALLAGES ET POIDS . VERPACKUNG UND GEWICHTE

FORMATO SIZE . FORMAT . FORMAT	PCS	MQ	KG	BOX	KG
33x33	14	1,50	22,54	46	1050,84
8,5x45,5	50	-	-	-	-



33x33 Cotto

FORNACI 33x33



33x33 Chiusi

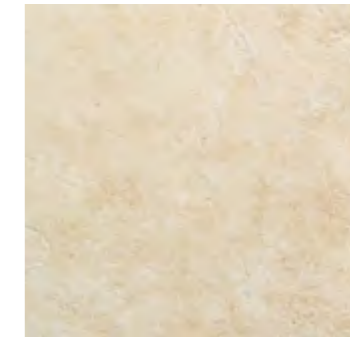
↓ IMBALLI E PESI . PACKING AND WEIGHTS .
EMBALLAGES ET POIDS . VERPACKUNG UND GEWICHTE

FORMATO SIZE . FORMAT . FORMAT	PCS	MQ	KG	BOX	KG
33x33	14	1,50	22,54	46	1056,84

GRAN DUCATO 32,5x32,5



32,5x32,5 Ferrara Beige



32,5x32,5 Rimini Almond

↓ PEZZI SPECIALI / SPECIAL PIECES
PIECES SPECIALES . FORMFEILE

BATTISCOPA 7,5x32,5	GRADIWO STEP 32,5x32,5

↓ IMBALLI E PESI . PACKING AND WEIGHTS .
EMBALLAGES ET POIDS . VERPACKUNG UND GEWICHTE

FORMATO SIZE . FORMAT . FORMAT	PCS	MQ	KG	BOX	KG
32,5x32,5	14	1,50	22,54	46	1056,84
7,5x32,5 BATTISCOPA	50	-	-	-	-

PONT DU GARD 32,5x32,5



32,5x32,5 Odra



PONT DU GARD 32,5x32,5



32,5x32,5 Grigio



32,5x32,5 Rosso



32,5x32,5 Odra

↓ PEZZI SPECIALI · SPECIAL PIECES
PIECES SPECIALES · FORMTEILE



BATTISCOPA
7,5x32,5

↓ IMBALLI E PESI · PACKING AND WEIGHTS ·
EMBALLAGES ET POIDS · VERPACKUNG UND GEWICHTE

FORMATO SIZE · FORMAT · FORMAT	PCS	MQ	KG	BOX	KG
32,5x32,5	14	1,50	22,54	46	1056,84
7,5x32,5	50	-	-	-	-

UMBRIA 33x33



VELA 32,5x32,5



33x33 Norcia Rosa



33x33 Foligno Beige



33x33 Cuio

↓ PEZZI SPECIALI . SPECIAL PIECES
PIÈCES SPÉCIALES . FORMTEILE



BATTISCOPA
7,5x33

↓ IMBALLI E PESI . PACKING AND WEIGHTS .
EMBALLAGES ET POIDS . VERPACKUNG UND GEWICHTE

FORMATO SIZE . FORMAT . FORMAT	PCS	MQ	KG	BOX	KG
33x33	14	1,50	22,54	46	1056,84
7,5x33 BATTISCOPA	50	-	-	-	-

↓ PEZZI SPECIALI . SPECIAL PIECES
PIÈCES SPÉCIALES . FORMTEILE



BATTISCOPA
7,5x33



GRADINO STEP
33x33

↓ IMBALLI E PESI . PACKING AND WEIGHTS .
EMBALLAGES ET POIDS . VERPACKUNG UND GEWICHTE

FORMATO SIZE . FORMAT . FORMAT	PCS	MQ	KG	BOX	KG
33x33	14	1,50	22,54	46	1056,84
33x33 GRADINO STEP	-	-	-	-	-
7,5x33 BATTISCOPA	50	-	-	-	-



33x50 York
33x50 York Grip



45,5x45,5 York Grip



33x50 Cluny
33x50 Cluny Grip



45,5x45,5 Cluny



33x33 York
33x33 York Grip



33x33 Cluny



↓ IMBALLI E PESI . PACKING AND WEIGHTS .
↓ EMBALLAGES ET POIDS . VERPACKUNG UND GEWICHTE

FORMATO SIZE . FORMAT . FORMAT	PCS	MQ	KG	BOX	KG
45,5x45,5 / 45,5x45,5 GRIP	6	1,25	24,00	52	1268,00
33x50 / 33x50 GRIP	8	1,32	22,56	40	922,40
33x33 / 33x33 GRIP	14	1,50	22,54	46	1056,84
8x33 BATTISCOPA	50	-	-	-	-

ARAGON 33x33



33x33 Verde

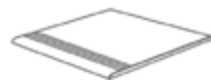


33x33 Rosso

↓ PEZZI SPECIALI . SPECIAL PIECES . PIÈCES SPÉCIALES . FORMTEILE



BATTISCOPA
8x33



GRADINO STEP
33x33

ARAGON 33x33



33x33 Inserto Aragon



16x33 Fascia Aragon



16,5x33 Fascia Meriggio Rosso



33x33 Ottagona Aragon



10x10 Tozzetto Rosso



16x16 Angolo Aragon

↓ IMBALLI E PESI . PACKING AND WEIGHTS . EMBALLAGES ET POIDS . VERPACKUNG UND GEWICHTE

FORMATO SIZE . FORMAT . FORMAT	PCS	MQ	KG	BOX	KG
33x33	14	1,50	22,54	46	1056,84
33x33 OTTAGONA	14	1,36	22,40	46	1050,40
33x33 INSERTO	8	-	13,20	-	-
10x10 TOZZETTO	80	-	16,80	-	-
10x10 TOZZETTO DECORATO	80	-	16,80	-	-
16x33 FASCIA ARAGON	8	-	6,60	-	-
16x16 ANGOLO ARAGON	6	-	2,40	-	-
16,5x33 FASCIA MERIGGIO	25	-	20,62	-	-
33x33 GRADINO STEP	16	-	26,40	-	-
8x33 BATTISCOPA	50	-	26,00	-	-



33x33 Crema



33x50 Crema
33x50 Crema Grip

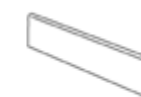


45,5x45,5 Crema
45,5x45,5 Crema Grip

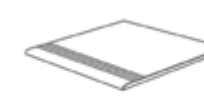


33x33 Crema
33x33 Crema Grip

↓ PEZZI SPECIALI . SPECIAL PIECES .
PIÈCES SPÉCIALES . FORMTEILE



BATTISCOPA
8x33
8,5x45,5



GRADINO STEP
33x33

↓ IMBALLI E PESI . PACKING AND WEIGHTS .
EMBALLAGES ET POIDS . VERPACKUNG UND GEWICHTE

FORMATO SIZE . FORMAT . FORMAT	PCS	MQ	KG	BOX	KG
45,5x45,5 / 45,5x45,5 GRIP	6	1,25	24,00	52	1268,00
33x50 / 33x50 GRIP	8	1,32	22,56	40	922,40
33x33 / 33x33 GRIP	14	1,50	22,54	46	1056,84
8x33 BATTISCOPA	50	-	-	-	-
8x45,5 BATTISCOPA	20	-	-	-	-
33x33 GRADINO STEP	6	-	26,40	-	-

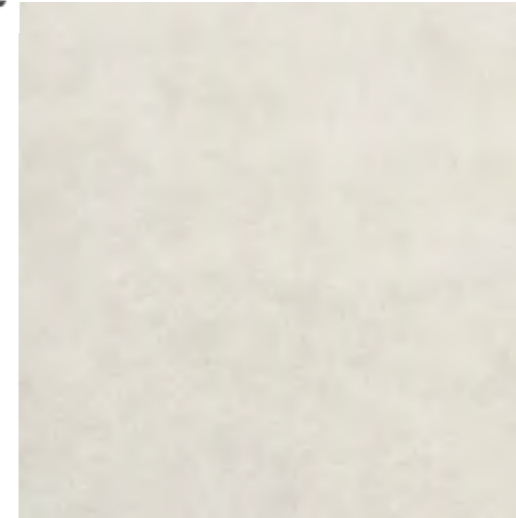
ART DÉCO



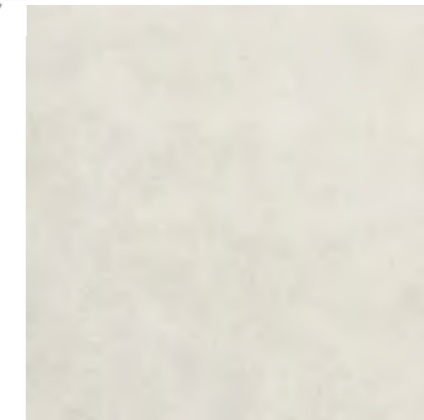
32,2x32,2 White / Decoro Noir/White



ART DÉCO



60,3x60,3 White



45,5x45,5 White



32,5x32,5 White



32,5x32,5 Noir



32,5x32,5 Decoro Noir/White

ART DÉCO



ART DÉCO



60,3x60,3 Light Grey



45,5x45,5 Light Grey



32,5x32,5 Light Grey



45,5x45,5 Greige



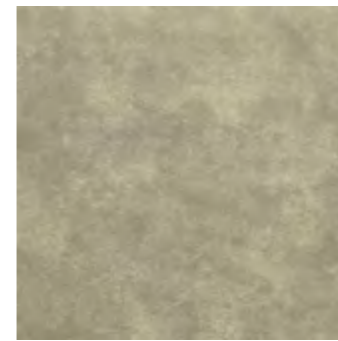
32,5x32,5 Greige



32,5x32,5 Dark Grey



32,5x32,5 Decoro Grey



32,5x32,5 Taupe



32,5x32,5 Decoro Taupe

ART DÉCO



ART DÉCO



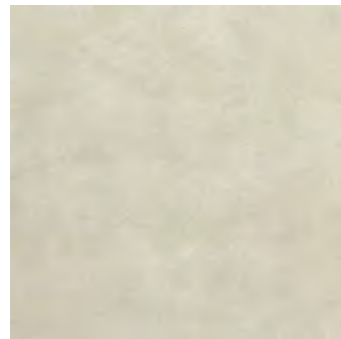
60,3x60,3 Ivory



45,5x45,5 Ivory



32,5x32,5 Ivory



32,5x32,5 Beige



32,5x32,5 Decoro Beige

↓ PEZZI SPECIALI . SPECIAL PIECES
PIÈCES SPÉCIALES . FORMTEILE



BATTISCOPIA
8,5x45,5
7x60,3
7,5x32,5

↓ IMBALLI E PESI . PACKING AND WEIGHTS .
EMBALLAGES ET POIDS . VERPACKUNG UND GEWICHTE

FORMATO SIZE . FORMAT . FORMAT	PCS	MQ	KG	BOX	KG
60,3x60,3	4	1,10	27,20	40	995,00
45,5x45,5	8	1,70	28,08	52	1434,40
32,5x32,5	14	1,50	22,54	46	1056,84
32,5x32,5 DECORO	14	1,50	22,54	46	1056,84
7,5x32,5 BATTISCOPIA	50	-	27,50	-	-
8,5x45,5 BATTISCOPIA	20	-	-	-	-
7x60,3 BATTISCOPIA	20	-	-	-	-



32,5x32,5 Beige / Light Grey / Decoro Beige

BONNIEUX



30x60 Beige



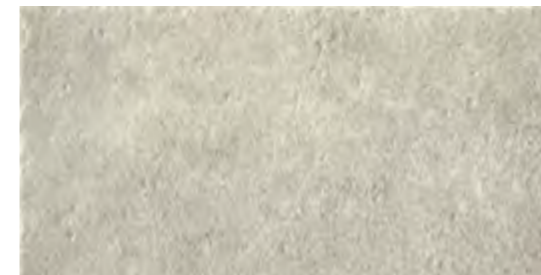
BONNIEUX



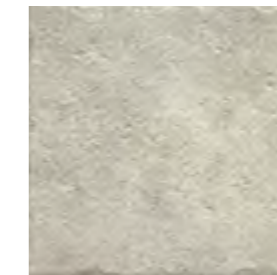
30x60 Taupe
30x60 Taupe Grip



30x30 Mosaico 5x5 Taupe



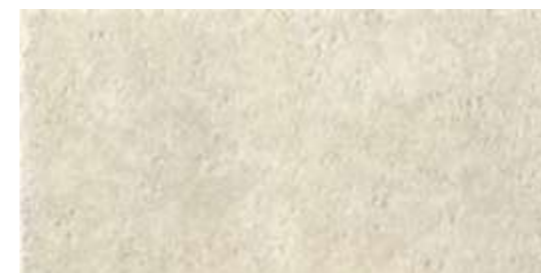
30x60 Pierre
30x60 Pierre Grip



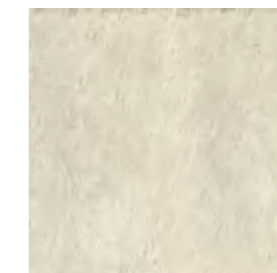
30x30 Pierre



30x30 Mosaico 5x5 Pierre



30x60 Beige
30x60 Beige Grip



30x30 Beige



30x30 Mosaico 5x5 Beige

↓ PEZZI SPECIALI . SPECIAL PIECES
PIÈCES SPÉCIALES . FORMTEILE



BATTISCOPA
7x60

↓ IMBALLI E PESI . PACKING AND WEIGHTS .
EMBALLAGES ET POIDS . VERPACKUNG UND GEWICHTE

FORMATO SIZE . FORMAT . FORMAT	PCS	MQ	KG	BOX	KG
30x60 / 30x60 GRIP	8	1,44	25,12	48	1225,76
30x30	16	1,50	22,49	60	1369,76
30x30 MOSAICO 5x5	11	1,00	-	30	-
7x60 BATTISCOPA	20	-	-	-	-

QUARZITE



30x60 Nero / 30x30 Mosaico 5x5 Nero



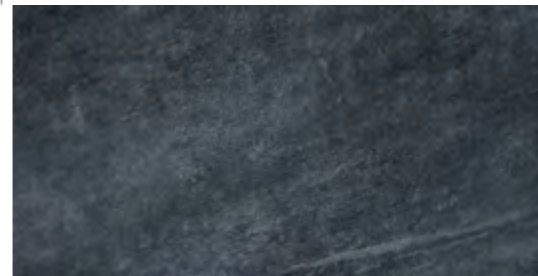
QUARZITE

10 mm

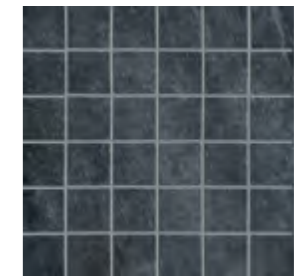


45,5x91 Nero

9 mm

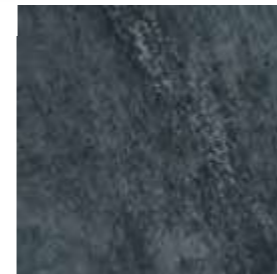


30x60
30x60 Nero Grip



30x30 Mosaico 5x5 Nero

7,5 mm

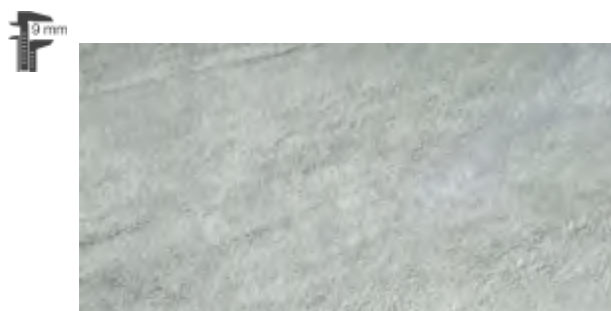


30x30 Nero

QUARZITE



45,5x91 Grigio



30x60
30x60 Grigio Grip



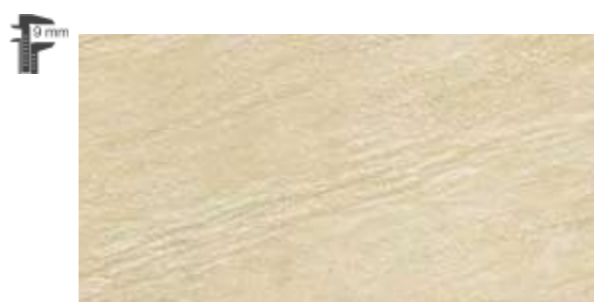
30x30 Grigio



30x30 Mosaico 5x5 Grigio



45,5x91 Ivory



30x60
30x60 Grip Ivory Grip



30x30 Mosaico 5x5 Ivory



30x30 Ivory

↓ PEZZI SPECIALI . SPECIAL PIECES
PIÈCES SPÉCIALES . FORMTEILE



BATTISCOPA
9,5x60

QUARZITE

↓ IMBALLI E PESI . PACKING AND WEIGHTS .
EMBALLAGES ET POIDS . VERPACKUNG UND GEWICHTE

FORMATO SIZE . FORMAT . FORMAT	PCS	MQ	KG	BOX	KG
45,5x91	3	1,25	26,50	32	899,36
30x60 / 30x60 GRIP	8	1,44	25,12	48	1225,76
30x30	18	1,65	24,12	60	1467,20
30x30 MOSAICO 5x5	11	1,00	-	30	-
9,5x60 BATTISCOPA	20	-	-	-	-

TIMES SQUARE



34x34 Anthracite



TIMES SQUARE



60x60 Anthracite



30x60 Anthracite



34x34 Anthracite

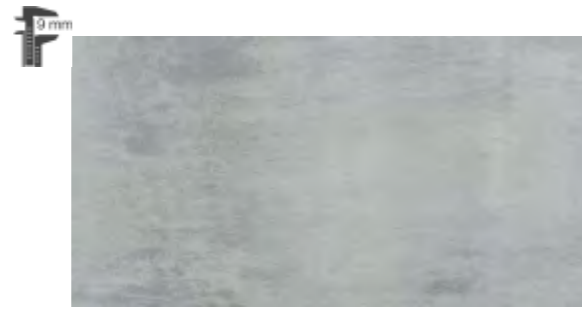
TIMES SQUARE



TIMES SQUARE



60x60 Gris



30x60 Gris



60x60 Beige



30x60 Beige



34x34 Gris



34x34 Beige

TIMES SQUARE



10 mm



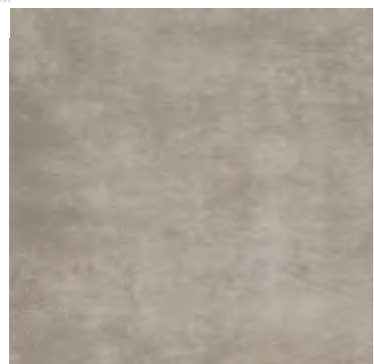
60x60 Taupe

9 mm



30x60 Taupe

8 mm



34x34 Taupe

↓ PEZZI SPECIALI . SPECIAL PIECES
PIÈCES SPÉCIALES . FORMTEILE



BATTISCOPIA
9,5x60

RIVESTIMENTO COORDINATO PAG. 146

↓ IMBALLI E PESI . PACKING AND WEIGHTS .
EMBALLAGES ET POIDS . VERPACKUNG UND GEWICHTE

FORMATO SIZE . FORMAT . FORMAT	PCS	MQ	KG	BOX	KG
30x60	8	1,44	25,12	48	1225,76
60x60	4	1,48	27,20	32	890,40
34x34	7	1,45	20,82	52	1476,00
9,5x60 BATTISCOPIA	20	-	-	-	-

TIMES SQUARE

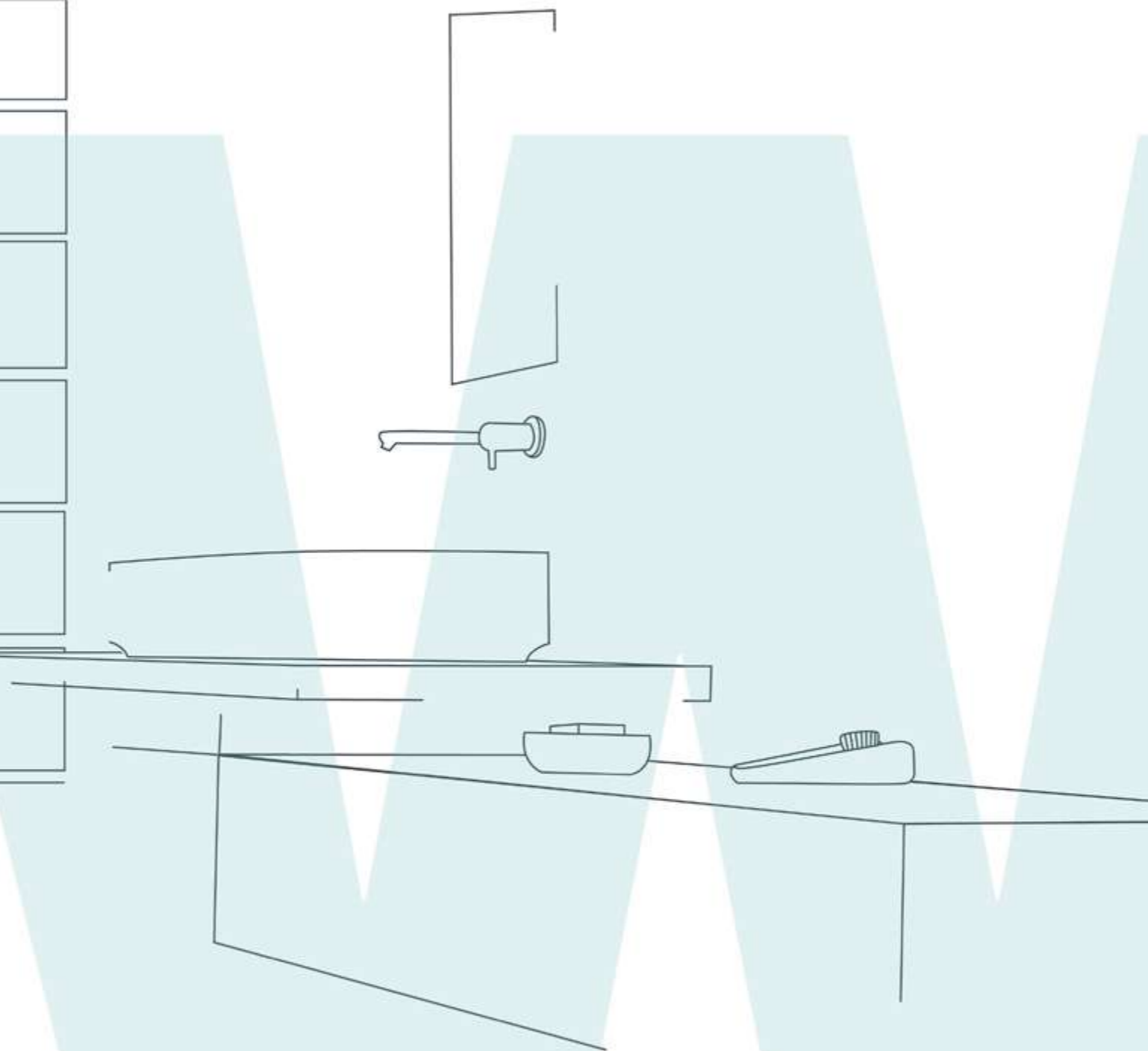
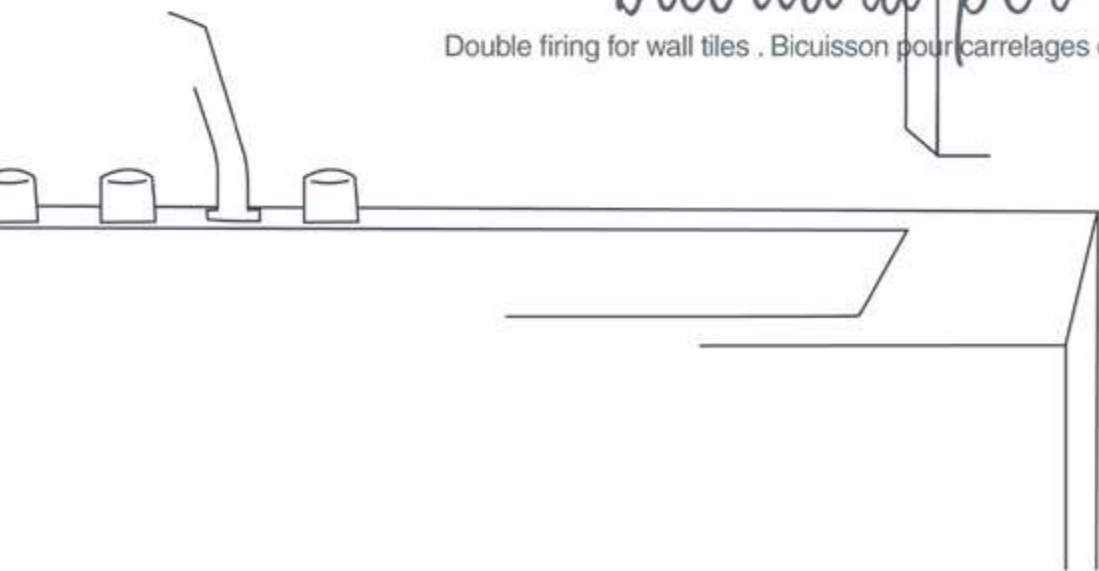


34x34 Taupe

Walle

bicottura per rivestimento

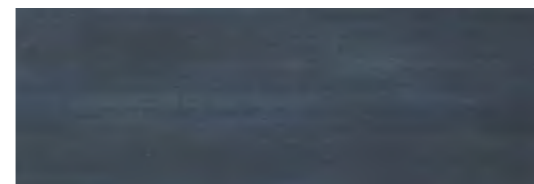
Double firing for wall tiles . B cuisson pour carrelages de mur . Zweibrand für Wandfliesen.



DEVORÉ 20x60



20x60 Blu Piombo / Bianco / Blu Adriatico
Pavimento Coordinato GTOT 15x90 Chalet Street Bleu



20x60 Blu Piombo



20x60 Grigio



20x60 Decoro Soft Grigio



20x60 Blu Adriatico



20x60 Decoro Shine Blu

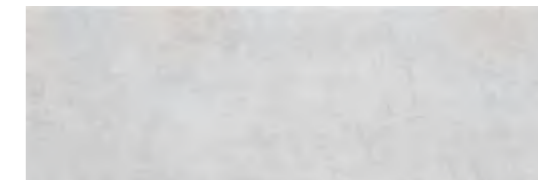


5x60 Listello Shine Blu

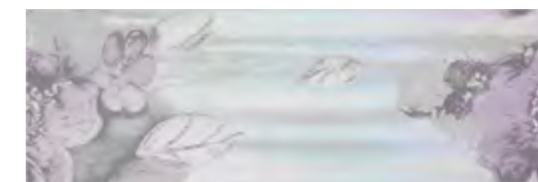
DEVORÉ 20x60



20x60 Bianco



20x60 Soft Decoro Bianco



20x60 Decoro Shine Bianco



5x60 Listello Shine Bianco

DEVORÉ 25x60



20x60 Visone



20x60 Decoro Soft Visone



20x60 Antracite



20x60 Decoro Soft Antracite



20x60 Beige



20x60 Decoro Soft Beige



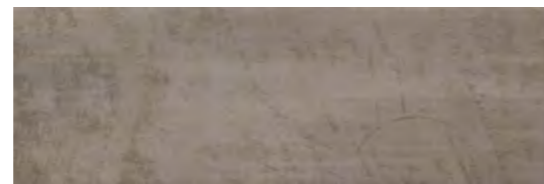
20x60 Decoro Shine Beige



5x60 Listello Shine Beige



20x60 Taupe



20x60 Decoro Soft Taupe



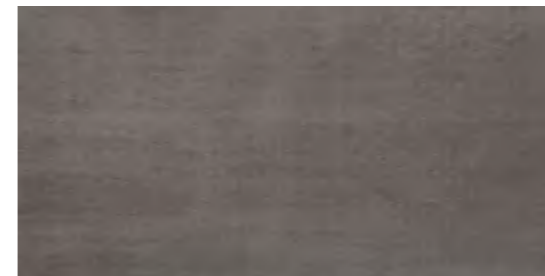
PAVIMENTO COORDINATO



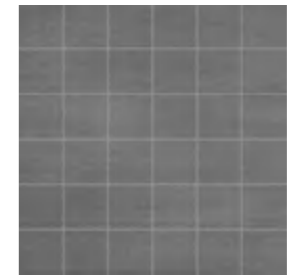
30x60 Anthracite



30x60 Gris



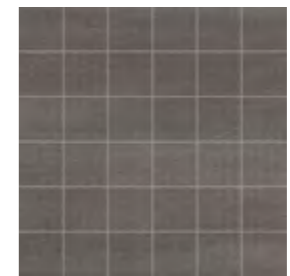
30x60 Vision



30x30 Mosaico 5x5 Anthracite



30x30 Mosaico 5x5 Gris



30x30 Mosaico 5x5 Vision

↓ IMBALLI E PESI . PACKING AND WEIGHTS .
EMBALLAGES ET POIDS . VERPACKUNG UND GEWICHTE

FORMATO SIZE . FORMAT . FORMAT	PCS	MQ	KG	BOX	KG
20x60	9	1,08	17,10	64	1114,40
20x60 DECORO SOFT	9	1,08	17,10	64	1114,40
20x60 DECORO SHINE	6	-	-	-	-
4x60 LISTELLO	6	-	-	-	-
30x60	8	1,44	25,12	48	1225,76
30x30 MOSAICO	11	1,00	-	-	-

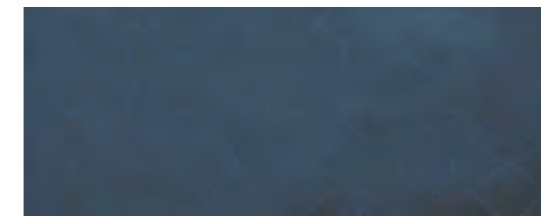
DRAMA 25x60



DRAMA 25x60



25x60 Blu Notte / Grigio Pioggia / Latte



25x60 Blu Notte



25x60 Grigio Pioggia



25x60 Latte

↓ IMBALLI E PESI . PACKING AND WEIGHTS .
EMBALLAGES ET POIDS . VERPACKUNG UND GEWICHTE

FORMATO SIZE . FORMAT . FORMAT	PCS	MQ	KG	BOX	KG
25x60	9	1,35	21,60	48	1056,80

VANGOG 25x60



25x60 Bleu / Decoro Flower Bleu / Blanc



VANGOG 25x60



25x60 Bleu



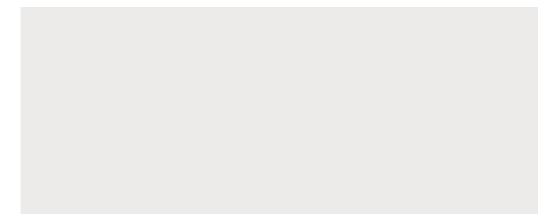
25x60 Prune



25x60 Decoro Flower Bleu



25x60 Decoro Flower Prune



25x60 Blanc

↓ IMBALLI E PESI . PACKING AND WEIGHTS .
EMBALLAGES ET POIDS . VERPACKUNG UND GEWICHTE

FORMATO SIZE . FORMAT . FORMAT	PCS	MQ	KG	BOX	KG
25x60	9	1,35	21,60	48	1056,80
25x60 DECORO	2	-	-	-	-

LAQUE 20x50



20x50 Blue Satin / Decoro I Love You / Pergamon / 4,5x50 Listello I Love You / 34x34 Blue Satin



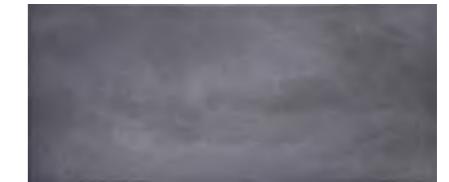
LAQUE 20x50



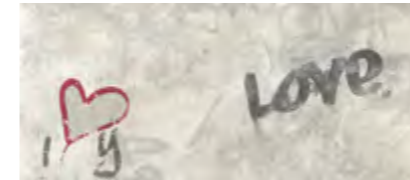
20x50 Pergamon



20x50 Pearl



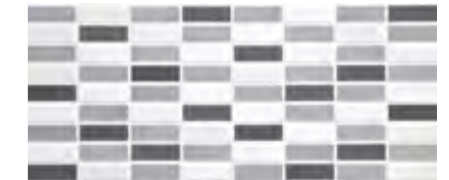
20x50 Blue Satin



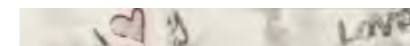
20x50 Decoro I Love You



20x50 Decoro Skyline NY Pearl



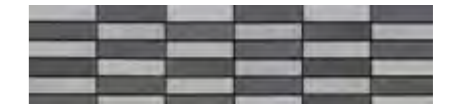
20x50 Mosaico Freddo



4,5x50 Listello I Love You



4,5x50 Listello Skyline NY Pearl



10x50 Mosaico Mix



20x50 Decoro Galet



4,5x50 Listello Skyline OXF Pearl



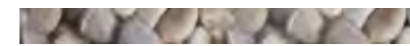
3x50 Listello Unis Blue Satin



3x50 Listello Unis Pearl



3x50 Listello Classique Blue Satin



4,5x50 Listello Galet



5x50 Listello Brooklyn Perle

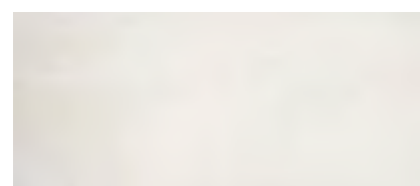


6x50 Listello Classique Blue Satin



5x50 Listello Brooklyn Antracite

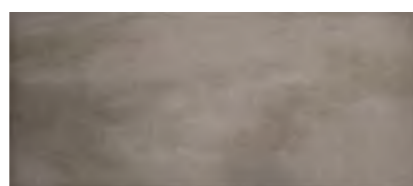
LAQUE 20x50



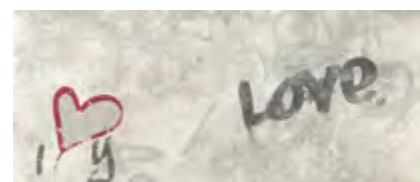
20x50 Beige



20x50 Particulière



20x50 Taupe



20x50 Decoro I Love You



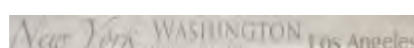
20x50 Decoro Skyline NY Particulière



20x50 Mosaico Caldo



4,5x50 Listello I Love You



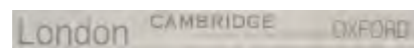
4,5x50 Listello Skyline NY Particulière



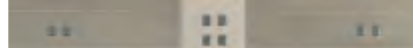
3x50 Listello Classique Taupe



20x50 Decoro Galet



4,5x50 Listello Skyline OXF Particulière



6x50 Listello Classique Taupe



3x50 Listello Unis Particulière



3x50 Listello Unis Taupe



4,5x50 Listello Galet



5x50 Listello Brooklyn Greige



5x50 Listello Brooklyn Taupe



PAVIMENTO COORDINATO



34x34 Blue Satin



34x34 Taupe

LAQUE 34x34

↓ IMBALLI E PESI / PACKING AND WEIGHTS
↓ EMBALLAGES ET POIDS / VERPAKKUNG UND GEWICHTE

FORMAT SIZE / FORMAT / FORMAT	PCS	MT	KG	BOX	KG
20x50	18	1,60	16,20	48	50,40
20x50 BEIGE	18	1,60	16,20	48	50,40
20x50 PARTICULIERE	18	1,60	16,20	48	50,40
20x50 TAUPE	18	1,60	16,20	48	50,40
20x50 DECORO I LOVE YOU	18	1,60	16,20	48	50,40
20x50 DECORO SKYLINE NY PARTICULIERE	18	1,60	16,20	48	50,40
20x50 MOSAICO CALDO	18	1,60	16,20	48	50,40
4,5x50 LISTELLO I LOVE YOU	6	0,53	5,31	16	16,51
4,5x50 LISTELLO SKYLINE NY PARTICULIERE	6	0,53	5,31	16	16,51
3x50 LISTELLO CLASSIQUE TAUPE	6	0,53	5,31	16	16,51
20x50 DECORO GALET	18	1,60	16,20	48	50,40
4,5x50 LISTELLO GALET	6	0,53	5,31	16	16,51
4,5x50 LISTELLO SKYLINE OXF PARTICULIERE	6	0,53	5,31	16	16,51
6x50 LISTELLO CLASSIQUE TAUPE	6	0,53	5,31	16	16,51
3x50 LISTELLO UNIS PARTICULIERE	6	0,53	5,31	16	16,51
3x50 LISTELLO UNIS TAUPE	6	0,53	5,31	16	16,51
5x50 LISTELLO BROOKLYN GREIGE	6	0,53	5,31	16	16,51
5x50 LISTELLO BROOKLYN TAUPE	6	0,53	5,31	16	16,51

LE VERNIS 20x50,2



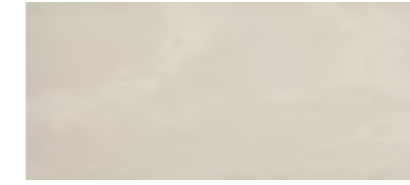
20x50,2 Plomb / 4x50,2 Listello Lotus Plomb



LE VERNIS 20x50,2



20x50,2 Plomb



20x50,2 Pearl



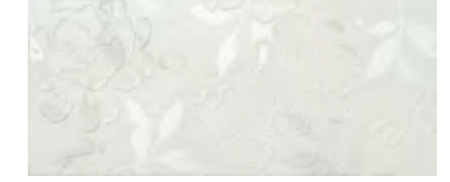
20x50,2 Pergamon



20x50,2 Decoro Liliac Plomb



20x50,2 Decoro Liliac Pearl



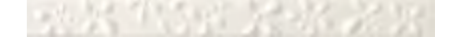
20x50,2 Decoro Liliac Pergamon



4x50,2 Listello Lotus Plomb



4x50,2 Listello Lotus Pearl



4x50,2 Listello Lotus Pergamon



3,5x50,2 Listello London Plomb



3,5x50,2 Listello London Pearl



3,5x50,2 Listello London Pergamon



20x25 Formella Fleurs A/B Pearl



20x25 Formella Fleurs A/B Pergamon



4,5x50,2 Listello Macramè Pergamon

LE VERNIS 20x50,2



20x50,2 Particulière



20x50,2 Vamp



20x50,2 Decoro Liliac Particulière



4x50,2 Listello Lotus Vamp



4x50,2 Listello Lotus Particulière



3,5x50,2 Listello London Vamp



3,5x50,2 Listello London Particulière



20x25 Formella Fleurs A/B Particulière

↓ IMBALLI E PESI . PACKING AND WEIGHTS .
 EMBALLAGES ET POIDS . VERPACKUNG UND GEWICHTE

FORMATO SIZE . FORMAT . FORMAT	PCS	MQ	KG	BOX	KG
20x50,2	13	1,31	19,00	48	932,28
20x50,2 DECORO LILIAC	6	-	9,24	-	-
20x25,1 FORMELLA FLEURS A/B	4	-	3,83	-	-
4x50,2 LISTELLO LOTUS	6	-	3,00	-	-
4,5x50,2 LISTELLO MACRAMÉ	6	-	3,00	-	-
3,5x50,2 LONDON	12	-	3,24	-	-

LE VERNIS 20x50,2



20x50,2 Particulière / Beige Pétal / 20x25 Formella Fleurs A7B Beige Pétal

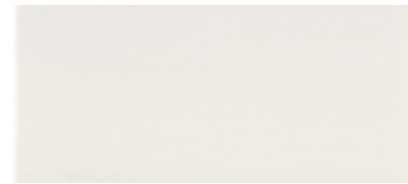
LOFT BRILLANT 20x50,2



20x50,2 Blue Bleu Brillant 02 / Blanc Brillant



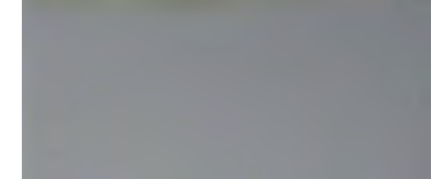
LOFT BRILLANT 20x50,2



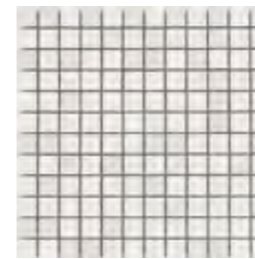
20x50,2 Blanc Brillant



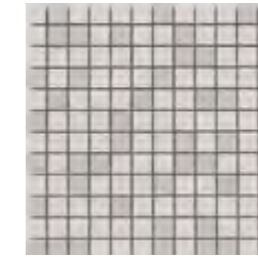
20x50,2 Gris Galet Brillant 05



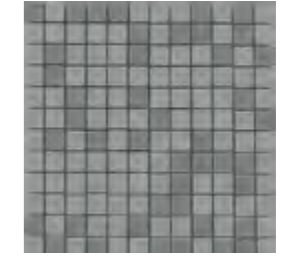
20x50,2 Gris Galet Brillant 03



30x30 Mosaico 2x2
Blanc Brillant



30x30 Mosaico 2x2
Gris Galet Brillant 05



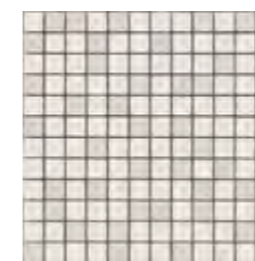
30x30 Mosaico 2x2
Gris Galet Brillant 03



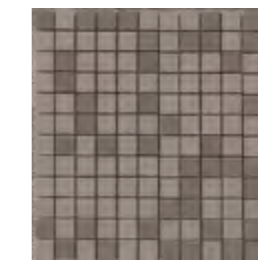
20x50,2 Blanc Lin Brillant 01



20x50,2 Brun Taupe Brillant 03



30x30 Mosaico 2x2
Blanc Lin Brillant 01



30x30 Mosaico 2x2
Brun Taupe Brillant 03

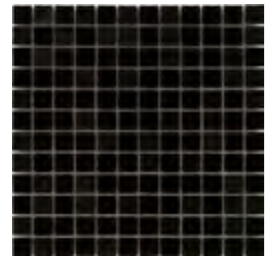
LOFT BRILLANT 20x50,2



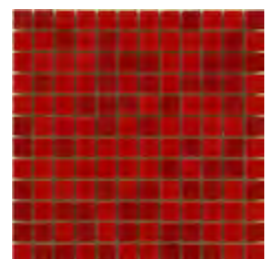
20x50,2 Noir Brillant 0



20x50,2 Rouge Brillant 03



30x30 Mosaico 2x2
Noir Brillant 0



30x30 Mosaico 2x2
Rouge Brillant 03



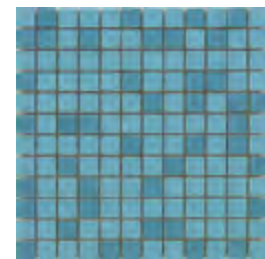
20x50,2 Bleu Atoll Brillant 03



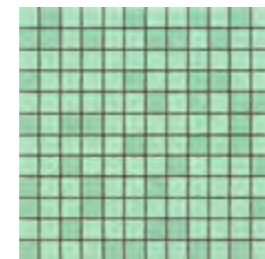
20x50,2 Vert D'Eau Brillant



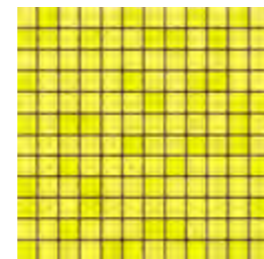
20x50,2 Jaune Yuzu Brillant



30x30 Mosaico 2x2
Bleu Atoll Brillant 03



30x30 Mosaico 2x2
Vert D'Eau Brillant



30x30 Mosaico 2x2
Jaune Yuzu Brillant

↓ IMBALLI E PESI . PACKING AND WEIGHTS .
EMBALLAGES ET POIDS . VERPACKUNG UND GEWICHTE

FORMATO SIZE . FORMAT . FORMAT	PCS	MQ	KG	BOX	KG
20x50,2	13	1,31	19,00	48	932,28
30x30	6	-	-	-	-

LOFT BRILLANT 20x50,2



20x50,2 Vert D'Eau Brillant / Jaune Yuzu Brillant

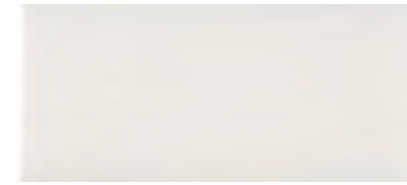
ONDA 20x50,2



20x50,2 Blanc Satin / Anthracite Satin / Decoro Struttura Vague Gris



ONDA 20x50,2



20x50,2 Blanc Satin



20x50,2 Decoro Struttura Vague Blanc



20x50,2 Gris Satin



20x50,2 Decoro Struttura Vague Gris



20x50,2 Anthracite Satin

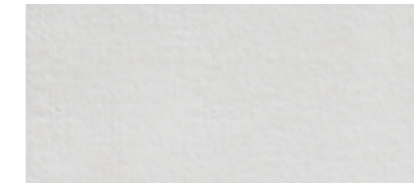
↓ IMBALLI E PESI . PACKING AND WEIGHTS .
EMBALLAGES ET POIDS . VERPACKUNG UND GEWICHTE

FORMATO SIZE . FORMAT . FORMAT	PCS	MQ	KG	BOX	KG
20x50,2	14	1,41	20,16	48	987,68

SALENTO 20x50,2



20x50,2 Tabacco / Avorio / Decoro Salento Tabacco / 3,5x50,2 Listello Salento Tabacco / 20x25 Mosaico Tabacco



20x50,2 Avorio



20x50,2 Tabacco



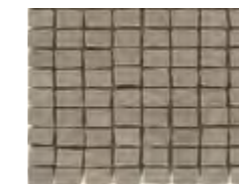
20x50,2 Decoro Salento Tabacco



3,5x50,2 Listello Salento Tabacco

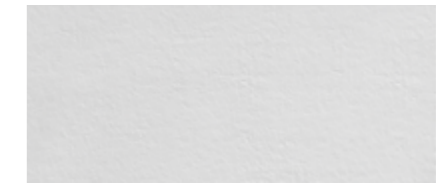


5x50,2 Listello Mandorla Warm



20x25 Mosaico 2,3x2,3 Tabacco

SALENTO 20x50,2



20x50,2 Bianco



20x50,2 Grigio



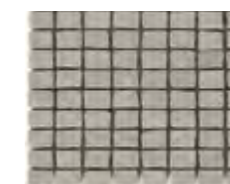
20x50,2 Decoro Salento Grigio



3,5x50,2 Listello Salento Grigio



5x50,2 Listello Mandorla Cold



20x25 Mosaico 2,3x2,3 Grigio

↓ IMBALLI E PESI . PACKING AND WEIGHTS .
EMBALLAGES ET POIDS . VERPACKUNG UND GEWICHTE

FORMATO SIZE . FORMAT . FORMAT	PCS	MQ	KG	BOX	KG
20x50	16	1,60	18,75	48	920,09
20x25 MOSAICO	6	-	6,00	-	-
20x50 DECORO COLD/WARM	6	-	9,24	-	-
5x50 LIST. MANDORLA COLD/WARM	6	-	-	-	-
3,5x50 LISTELLO COLD/WARM	6	-	4,60	-	-

SATIN 20x50,2



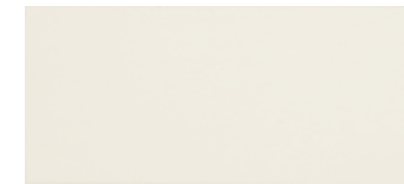
20x50,2 Bianco / Insetto Cucina Bianco



SATIN 20x50,2



20x50,2 Piombo



20x50,2 Bianco



20x50,2 Insetto Cucina Bianco



20x50,2 Insetto Fiore Bianco



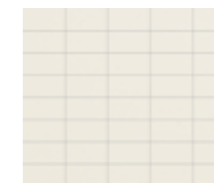
4x50,2 Listello Struttura Piombo



4x50,2 Listello Struttura Bianco

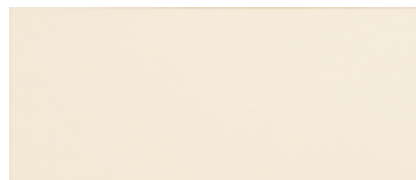


20x25 Mosaico 2,5x5 Piombo



20x25 Mosaico 2,5x5 Bianco

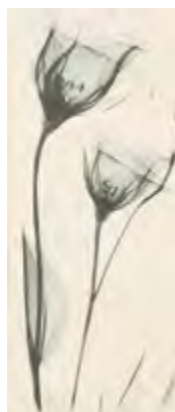
SATIN 20x50,2



20x50,2 Crema



20x50,2 Moka



20x50,2 Inserto Fiore Crema



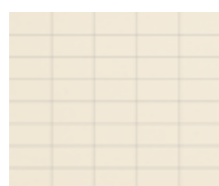
Inserto Cucina Crema



4x50,2 Listello Struttura Crema



4x50,2 Listello Struttura Moka



20x25 Mosaico 2,5x5 Crema



20x25 Mosaico 2,5x5 Moka

↓ IMBALLI E PESI . PACKING AND WEIGHTS .
EMBALLAGES ET POIDS . VERPACKUNG UND GEWICHTE

FORMATO SIZE . FORMAT . FORMAT	PCS	MQ	KG	BOX	KG
20x50,2	13	1,31	19,00	48	932,28
20x50,2 DECORO FIORE	6	-	9,24	-	-
20x50,2 DECORO CUCINA	6	-	9,24	-	-
4x50,2 LISTELLO STRUTTURA	6	-	1,65	-	-
20x25 MOSAICO 2,5x5	10	0,50	5,00	70	350,00

SATIN 20x50,2



20x50,2 Moka / Bianco / 4x50,2 Listello Struttura Moka / 20x25 Mosaico 2,5x5 Bianco

EXPO 25x45



25x45 Anthracite



25x45 Gris



FIRENZE 25x40



25x40 Gris

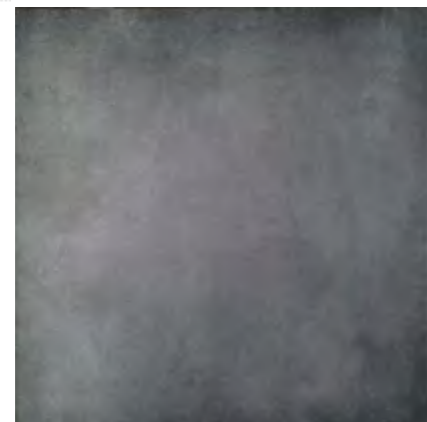


25x40 Blanc

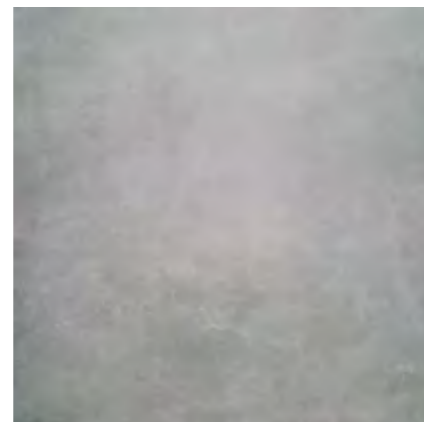


3x40 Listello Firenze

EXPO 45x45



45x45 Anthracite



45x45 Gris

↓ IMBALLI E PESI . PACKING AND WEIGHTS .
EMBALLAGES ET POIDS . VERPACKUNG UND GEWICHTE

FORMATO SIZE . FORMAT . FORMAT	PCS	MQ	KG	BOX	KG
25x45	16	1,80	22,604	65	1491,60
45x45	9	1,85	27,378	52	1443,65

↓ IMBALLI E PESI . PACKING AND WEIGHTS .
EMBALLAGES ET POIDS . VERPACKUNG UND GEWICHTE

FORMATO SIZE . FORMAT . FORMAT	PCS	MQ	KG	BOX	KG
25x40	14	1,40	20,804	54	1143,41
3x40 LISTELLO	36	-	6,480	-	-

LE VERNIS 20x40



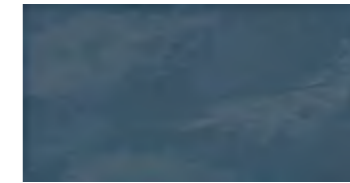
LE VERNIS 20x40



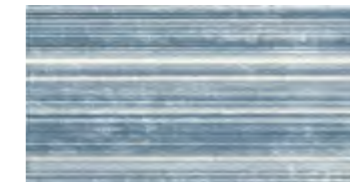
20x40 Blue Satin / Pergamon / Decoro Paul



20x40 Pergamon



20x40 Blue Satin



20x40 Decoro Paul



4x40 Listello Paul

↓ IMBALLI E PESI . PACKING AND WEIGHTS .
EMBALLAGES ET POIDS . VERPACKUNG UND GEWICHTE

FORMATO SIZE . FORMAT . FORMAT	PCS	MQ	KG	BOX	KG
20x40	20	1,60	20,70	48	1013,60
20x40 DECORO	4	-	-	-	-
4x40 LISTELLO	10	-	-	-	-

MELBOURNE 20x40



20x40 Blanc / Beige / 3x40 Listello Moka



MELBOURNE 20x40



20x40 Beige



20x40 Blanc



20x40 Moka



20x40 Perle



3x40 Listello Moka



20x40 Acier



6x40 Listello Moka



3x40 Listello Acier



6x40 Listello Acier

↓ IMBALLI E PESI . PACKING AND WEIGHTS .
EMBALLAGES ET POIDS . VERPACKUNG UND GEWICHTE

FORMATO SIZE . FORMAT . FORMAT	PCS	MQ	KG	BOX	KG
20x40	20	1,60	20,70	48	1013,60
20x40 MOSAICO ACIER	10	-	9,92	-	-
6x40 LISTELLO	12	-	4,224	-	-
3x40 LISTELLO	36	-	6,480	-	-

MELBOURNE 43x43



PAVIMENTO COORDINATO



43x43 Beige



43x43 Perle



43x43 Moka



43x43 Acier

↓ IMBALLI E PESI . PACKING AND WEIGHTS .
 EMBALLAGES ET POIDS . VERPACKUNG UND GEWICHTE

FORMATO SIZE . FORMAT . FORMAT	PCS	MQ	KG	BOX	KG
43x43	6	1,13	16,800	68	1162,00

MELBOURNE 43x43



20x40 Blanc / Acier / Perle / 6x40 Listello Acier / 3x40 Listello Acier / 34x34 Perle

MOIRÉ 20x40



20x40 Tabacco / Beige / 10x40 Fascia Iris Tabacco / 33x33 Tabacco



20x40 Tabacco



20x40 Beige



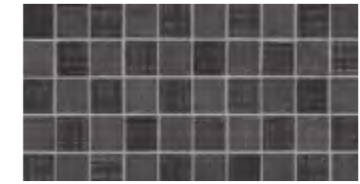
20x40 Nero



20x40 Mosaico 3x3 Moiré Tabacco



20x40 Mosaico 3x3 Moiré Beige



20x40 Mosaico 3x3 Moiré Nero



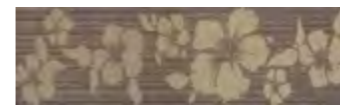
3x40 Listino Platino Tabacco



3x40 Listello Platino Beige



3x40 Listello Platino Nero



10x40 Fascia Iris Tabacco



1,5x40 Listello Glitter Nero



10x40 Fascia Iris Nero

PAVIMENTO COORDINATO



33x33 Tabacco

MOIRÉ 20x40



20x40 Tabacco / Beige / 10x40 Fascia Iris Tabacco / 33x33 Tabacco



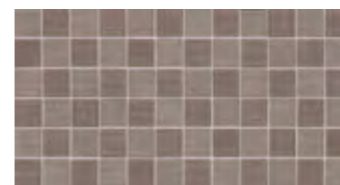
20x40 Tabacco



20x40 Beige



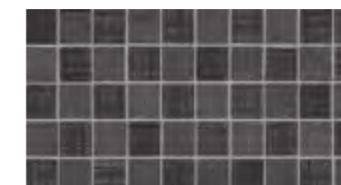
20x40 Nero



20x40 Mosaico 3x3 Moiré Tabacco



20x40 Mosaico 3x3 Moiré Beige



20x40 Mosaico 3x3 Moiré Nero



3x40 Listino Platino Tabacco



3x40 Listello Platino Beige



3x40 Listello Platino Nero



10x40 Fascia Iris Tabacco



1,5x40 Listello Glitter Nero



10x40 Fascia Iris Nero

PAVIMENTO COORDINATO



33x33 Tabacco

ROMA 20x40



20x40 Antracite / Grigio / 3x40 Listello Ripa Grigio



ROMA 20x40



20x40 Antracite



20x40 Grigio



3x40 List. Ripa Grigio

↓ IMBALLI E PESI . PACKING AND WEIGHTS .
EMBALLAGES ET POIDS . VERPACKUNG UND GEWICHTE

FORMATO SIZE . FORMAT . FORMAT	PCS	MQ	KG	BOX	KG
20x40	20	1,60	20,70	48	1013,60
3x40	24	-	4,700	-	-

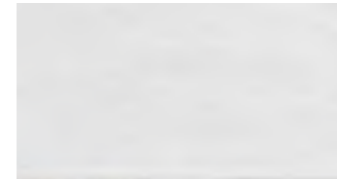
SETA 20x40



20x40 Jeans / Blanc / Decoro Maiolica / 5x40 Listello Maiolica



SETA 20x40



20x40 Blanc



20x40 Gris Foncé



20x40 Decoro Maiolica



5x40 Listello Maiolica

↓ IMBALLI E PESI . PACKING AND WEIGHTS .
EMBALLAGES ET POIDS . VERPACKUNG UND GEWICHTE

FORMATO SIZE . FORMAT . FORMAT	PCS	MQ	KG	BOX	KG
20x40 BLANC	20	1,60	20,70	48	1013,60
20x40 GRIS FONCÉ/JEANS	20	1,60	20,70	48	1013,60
20x40 DECORO MAIOLICA	6	-	5,82	-	-
5x40 LISTELLO MAIOLICA	24	-	5,856	-	-

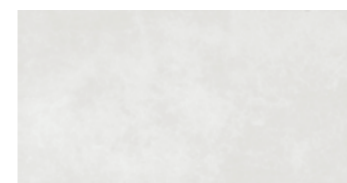
TIMES SQUARE 20x40



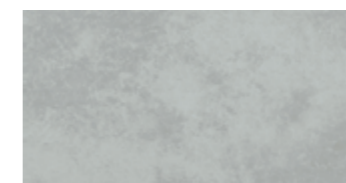
20x40 Blanc / Decoro Floreale Gris / Mosaico 2,5x5 Blanc



TIMES SQUARE 20x40



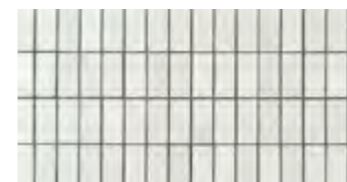
20x40 Blanc



20x40 Gris



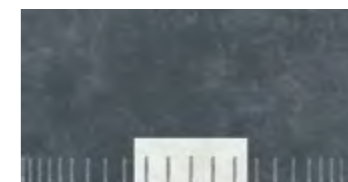
20x40 Anthracite



20x40 Mosaico 2,5x5 Blanc



20x40 Decoro Floreale Gris



20x40 Decoro Times Square Blanc

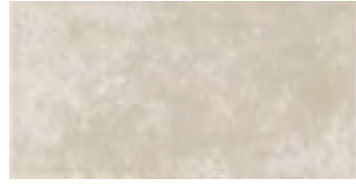


4,8x40 Listello Floreale Gris

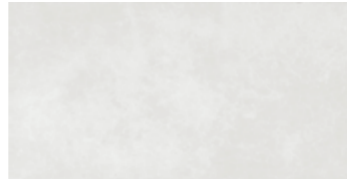
TIMES SQUARE 20x40



20x40 Taupe



20x40 Beige



20x40 Blanc



6x40 Listello Times Square Taupe



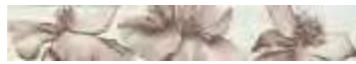
20x40 Decoro Floreale Beige



20x40 Decoro Times Square Taupe



3x40 Listello Times Square Taupe



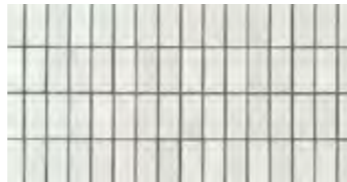
4,8x40 Listello Floreale Beige



20x40 Mosaico 2,5x5 Taupe



20x40 Mosaico 2,5x5 Beige



20x40 Mosaico 2,5x5 Blanc

PAVIMENTO COORDINATO PAG. 52

↓ IMBALLI E PESI . PACKING AND WEIGHTS .
EMBALLAGES ET POIDS . VERPACKUNG UND GEWICHTE

FORMATO SIZE . FORMAT . FORMAT	PCS	MQ	KG	BOX	KG
20x40	20	1,60	20,70	48	1013,60
20x40 MOSAICO	10	-	9,92	-	-
20x40 DECORO TIMES SQUARE	12	-	13,50	-	-
20x40 DECORO FLOREALE	12	-	13,50	-	-
6x40 LISTELLO TIMES SQUARE	12	-	4,00	-	-
4,8x40 LISTELLO FLOREALE	24	-	6,48	-	-
3x40 LISTELLO TIMES SQUARE	36	-	5,70	-	-

TIMES SQUARE 20x40



20x40 Blanc / Beige / Mosaico 2,5x5 Blanc

TINTE UNITE



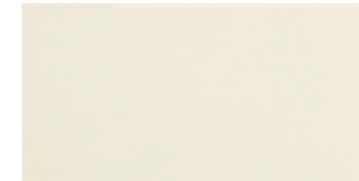
20x50,2 Mysti Jade / Eggshell Bleu / Baltic / 20x25 Mosaico Mix



TINTE UNITE



20x50,2 Baltic



20x40 Vaniglia Matt



20x50,2 Mysti Jade



20x40 Bianco Matt



20x50,2 Eggshell Bleu



20x25 Mosaico Mix 2x2

↓ IMBALLI E PESI . PACKING AND WEIGHTS .
EMBALLAGES ET POIDS . VERPACKUNG UND GEWICHTE

FORMATO SIZE . FORMAT . FORMAT	PCS	MQ	KG	BOX	KG
20x50,2	13	1,31	19,00	48	932,28
20x25 MOSAICO MIX	10	-	6,00	-	-
20x40	20	1,60	20,70	48	1013,60

VELVET 20x40



20x40 Bianco / Nero / Decoro Fascia Perle Bianco / 3x40 Listello Peltro Nero



VELVET 20x40



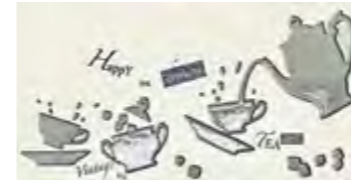
20x40 Nero



20x40 Bianco



20x40 Decoro Fascia Perle Bianco



20x40 Decoro Cucina Bianco



20x40 Decoro Velvet Bianco



10x40 Listello Trame Bianco



1x40 Matita Velvet Nero



3x40 Listello Velvet Bianco



3x40 Listello Peltro Nero



3x40 Listello Peltro Bianco



20x40 Decoro Fascia Perle Nero

VELVET 20x40



PAVIMENTO COORDINATO

VELVET



20x40 Cioccolato



20x40 Beige



20x40 Decoro Cucina Beige



20x40 Decoro Velvet Beige



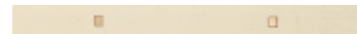
1x40 Matita Velvet Cioccolato



3x40 Listello Velvet Beige



3x40 Listello Peltro Cioccolato



3x40 Listello Peltro Beige



20x40 Decoro Fascia Perle Cioc.



3x40 Decoro Fascia Perle Beige



10x40 Listello Trame Cioccolato



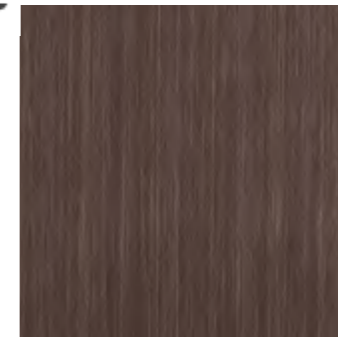
10x40 Listello Trame Beige



30x60 Nero



30x60 Crema



33x33 Moka



33x33 Crema

↓ IMBALLI E PESI . PACKING AND WEIGHTS .
EMBALLAGES ET POIDS . VERPACKUNG UND GEWICHTE

FORMATO SIZE . FORMAT . FORMAT	PCS	MQ	KG	BOX	KG
20x40	20	1,60	20,70	48	1013,60
20x40 DECORO FASCIA PERLE	12	-	13,50	-	-
20x40 DECORO VELVET	12	-	13,50	-	-
10x40 LISTELLO TRAME	18	-	10,18	-	-
3x40 LISTELLO PELTRO	12	-	2,16	-	-
3x40 LISTELLO VELVET	24	-	4,32	-	-
1x40 MATITA VELVET	24	-	2,40	-	-
30x60	7	1,26	23,10	48	1128,80
33x33	14	1,50	22,54	46	1056,84

VITTORIA 20x40



20x40 Fumo



3,5x40 Listello Sinfonia Fumo



20x40 Bianco

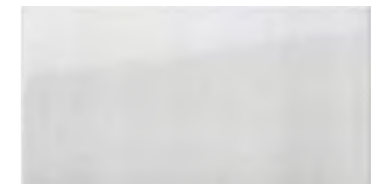
VOLUPTÉ 20x40



20x40 Gris Clair



20x40 Decoro Fleur Gris Clair



20x40 Blanc

↓ IMBALLI E PESI . PACKING AND WEIGHTS .
EMBALLAGES ET POIDS . VERPACKUNG UND GEWICHTE

FORMATO SIZE . FORMAT . FORMAT	PCS	MQ	KG	BOX	KG
20x40	20	1,60	20,70	48	1013,60
3,5x40	8	-	4,704	-	-

↓ IMBALLI E PESI . PACKING AND WEIGHTS .
EMBALLAGES ET POIDS . VERPACKUNG UND GEWICHTE

FORMATO SIZE . FORMAT . FORMAT	PCS	MQ	KG	BOX	KG
20x40	20	1,60	20,70	48	1013,60
20x40 DECORO	8	-	6,51	-	-

CONDIZIONI GENERALI DI VENDITA

ART. 1 ORDINAZIONI - LE COMMISSIONI, EVENTUALI VARIANTI, ESAZIONI, TRATTATIVE ABBUONI, FRANSAZIONI ECC FATTE DA AGENTI OD INTERMEDIARI NON SONO VALIDE SENZA NS. CONFERMA SCRITTA.

ART. 2 PREZZI - I PREZZI SI INTENDONO AL NETTO, PER CONTANTI PER CONSBEDNA FRANCO STABILIMENTO, SALVA DIVERSA PATTUIZIONE. SE FRA LA DATA DI ORDINAZIONE E QUELLA DI CONSEGNA SI VERIFICASSERO AUMENTI NEI COSTI DELLE MATERIE PRIME, DELLA MANO D'OPERA, DEI COMBUSTIBILI, NELLE SPESE DI PRODUZIONE, DI TRASPORTO ETC. IL VENDITORE POTRA' AUMENTARE IL PREZZO CONVENUTO. TUTTAVIA QUALORA OTTO PREZZO SUPERI DEL 20%, QUELLO CONVENUTO AL MOMENTO DELLA ORDINAZIONE. IL COMPRATORE POTRA' RISPONDERE DAL CONTRATTO NOTIFICANDOCI PER RACCOMANDATA TALE SUA VOGLIOTA ENTRO IL TERMINE PERENTORIO DI 30 GIORNI DAL RICEVIMENTO DELL'AVVISO DI AUMENTO DI PREZZO.

ART. 3 CONSEGNE - I TERMINI DI CONSEGNA SONO SEMPRE E PURAMENTE INDICATIVI E LA PROROGA DI ESSI NON PUO' DARE DIRITTO AL COMPRATORE A RICHIESTA DI INDENNIZZO OD ALTRO, OGNI ECCEZIONE FIDIOSA. SOLO NEL CASO IL RITARDO SUPERI (60 GIORNI) IL COMPRATORE POTRA' COMUNICARE CON LETTERA RACCOMANDATA LA SUA INTENZIONE DI CONSIDERARE RISOLTO IL CONTRATTO. FISSATA ESCLUSO OGNI RISARCIMENTO DI DANNI A SUO FAVORE.

ART. 4 SPEZZIONI - IL MATERIALE VIAGGA A RISCHIO E PERICOLO DEL COMPRATORE E SI INTENDE VENDUTO NELLO STABILIMENTO DEPOSITO QUANTINANDO IL VENDITORE OGNI RESPONSABILITA' ANCHE NEL CASO VENGA FORNITO FRANCO DESTINO. SARA' DOVERE DEL COMPRATORE VERIFICARE IL MATERIALE PRIMA DEL RITIRO, FACENDO LE DOVUTE RISERVE A CHI D'UNA RAGIONE NEL CASO VENISSEDO RISCONTRATE ROTTURE O DIFFERENZE NEL QUANTITATIVO DEL MATERIALE. DELLE QUALI IL VENDITORE NON PUO' ESSERE CHIAMATO A RISPONDERE.

ART. 5 PAGAMENTI - IL LUOGO DI PAGAMENTO RESTA FISSATO E FERMO ESCLUSIVAMENTE PRESSO LE NS. SEDI LEGALI. ANCHE NEL CASO NEL CONTRATTO SIA PREVISTO IL PAGAMENTO IN UN LUOGO DIVERSO O CON EMISSIONE DI TRATTE O CON RILASCIO DI CAMBIALI, LE RELATIVE CLAUSOLE SI INTENDONO RIVOLTE SOLTANTO A FACILITARE IL PAGAMENTO DA PARTE DEL COMPRATORE MA NON COMPORTANO LO SPOSTAMENTO DEL LUOGO STESSO CHE RESTA FISSATO PRESSO LE NS. SEDI. LE SPESE DI BOLLO ED INCASSO EFFETTI E TRATTE SONO A CARICO DEL COMPRATORE. FACOLTA' DI EMETTERE TRATTE - TRASCORRI TO GIORNI DA QUELLO FISSATO PER IL PAGAMENTO SAREMO SENZ'ALTRO AUTORIZZATI AD EMETTERE A COPERTURA DEL PREZZO TRATTA A VISTA CON SPESE E SENZA PREAVVISO.

ART. 6 RISERVATO DOMINIO - LE MERCI SONO VENDUTE CON PATTO DI RISERVATO DOMIO AI SENSI DEGLI ART. 1562 E 1563 DEL COD. CIV. DI CONSEGUENZA FINO AL TOTALE PAGAMENTO DELL'INTERO PREZZO. COMPRESI EVENTUALI INTERESSI ED ACCESSORI (TUTTI), LE MERCI RIMANGONO DI NS. PROPRIETA'.

ART. 7 INTERESSI DI MORIA - DAL GIORNO FISSATO PER IL PAGAMENTO DECORRERANNO A NS. FAVORE GLI INTERESSI COMMERCIALI CORRENTI.

ART. 8 CLAUSOLA RISOLUTIVA - IN CASO DI MANCATO PAGAMENTO, ANCHE DI UNA SOLA PARTE DEL MATERIALE GIA' FORNITO, E' ANCHE NEL CASO IL COMPRATORE RITARDI DI 8 GIORNI AD EFFETTUARE IL PAGAMENTO IN QUALSIASI FORMA PREVISTO, IL VENDITORE AVRA' LA FACOLTA' DI CONSIDERARE RISOLTO IL CONTRATTO CON CONSEGUENTE ESIGNERO DELL'OBBLIGO DI EFFETTUARE LE FORNITURE NON ANCORA ESEGUITE. COSI' PURE IN CASO DI INSOLVENZA, ANCHE SOLO APPARENTE, DELL'ACQUIRENTE.

ART. 9 SOLVE ET REPETE - PER NESSUN MOTIVO, (V) COMPRESI PRETESI VIZI O DIFFETTI DEL MATERIALE, IL COMPRATORE POTRA' SOSPENDERE O RITARDARE IL PAGAMENTO DEL MATERIALE RITIRATO, SALVA NATURALMENTE LA FACOLTA' DI RIPETERE QUANDO POSSA DIMOSTRARNE DI AVERE INDEBITAMENTE PAGATO.

ART. 10 RECLAMI E GARANZIA - NON SI PRENDONO IN CONSIDERAZIONE RECLAMI, SE NON FATTI DIRETTAMENTE A NOI TRASCORSI A 60 GGIALL'ARRIVO DELLA MERCE A DESTINO. IL COMPRATORE CHE ABBA AVANZATO RECLAMO IN TEMPO UTILE DOVRA' TENER FERMA A DISPOSIZIONE DEL VENDITORE PER OGNI CONTROLLO, TUTTA LA PARTITA DI MATERIALE E, OVE BIANO ACCERTATI VIZI O DIFFETTI DI QUALITA', EGLI AVRA' DIRITTO ALLA SOLA SOSTITUZIONE DEI MATERIALI DIFETTOSI CON ESCLUSIONE DI QUALSIASI RISARCIMENTO DANNI. LA GARANZIA DEL MATERIALE SI INTENDE LIMITATA SOLAMENTE ALLA PRIMA SCELTA E CON FORMALE ESCLUSIONE DEL MATERIALE DI SECONDA O TERZA SCELTA O DI STOCK. NON SI PRENDONO IN CONSIDERAZIONE RECLAMI DI MATERIALE GIA' POSTA IN OPERA. LA RESPONSABILITA' DELLA VENDITRICE IN NESSUN CASO SI ESTENDE ALL'USO CUI IL COMPRATORE INTENDE DESTINARE IL NS. PRODOTTO, NEMMENO NEL CASO CHE DA PARTE NS. SIANO FORNITI SUGGERIMENTI O CONSIGLI CIRCA L'USATA AZIONE DELLO STESSO, DIETRO NS. PREVIA AUTORIZZAZIONE. RIESAMO ESCLUSIVAMENTE ACCETTARE LA RESTITUZIONE DELLA MERCE.

ART. 11 DECADENZA DELLA GARANZIA - AL RICEVIMENTO DEL LA MERCE IL COMPRATORE DOVRA' SOTTOPORLA AD ACCURATO CONTROLLO, APPRENDO LE SCATOLE. IN CASO RISCONTRI VIZI IN QUALSIASI MODO APPARENTI E PER I QUALI OPERA LA NS. GARANZIA, IL COMPRATORE DOVRA' AVANZARE RECLAMO CHE SARA' VALIDO SOLTANTO SE SARA' FORMULATO CON LETTERA RACCOMANDATA INDIRIZZATA DIRETTAMENTE A NOI ENTRO IL TERMINE PERENTORIO DI OTTO GIORNI DAL RICEVIMENTO DEL MATERIALE. DECORRO TALE TERMINE IL COMPRATORE DECADRA' DA OGNI GARANZIA PER QUALSIASI VIZIO CHE POSSA ESSERE CONSIDERATO APPARENTE. A PARERE DI UN ESPERTO. NEL CASO ABBA AVANZATO UTILMENTE RECLAMO IL COMPRATORE DOVRA' TENERE A NS. DISPOSIZIONE L'INTERA PARTITA DI MATERIALE. OVE INVECE NE DISPONDA, ANCHE IN PARTE, DEGADRA' DA OGNI GARANZIA.

ART. 12 FORO - PER QUALSIASI CONTROVERSBIA, COMONQUE RELATIVA ALLA FORNITURA, TANTO DA PARTE DEL VENDITORE COME DA PARTE DEL COMPRATORE, VIENE ATTRIBUITA, COM APPLICAZIONE DELLA LEGGE ITALIANA, COMPETENZA ESCLUSIVA AL TRIBUNALE DI REGGIO EMILIA. IL TUTTO, SALVO DIVERSA DESIGNAZIONE DA PARTE DEL VENDITORE.

GENERAL CONDITIONS OF SALE

1 BUYER'S ACCEPTANCE OF SELLER'S GENERAL CONDITIONS OF SALE - THESE GENERAL CONDITIONS OF SALE SHALL APPLY TO EVERY CONTRACT OF "SELLER" FOR THE SALE OF GOODS OR ARTICLES ("MERCHANDISE") TO ANY PERSON WHO HAS PURCHASED OR AGREED TO PURCHASE MERCHANDISE FROM SELLER (THE "BUYER"), UNLESS SELLER OTHERWISE SPECIFICALLY AGREES IN WRITING BY PLACING ANY ORDER FOR MERCHANDISE. THE BUYER AGREES TO THESE GENERAL CONDITIONS OF SALE. ANY OTHER TERMS OR CONDITIONS WHICH MAY AT ANY TIME BE INDICATED BY THE BUYER, IN THE BUYER'S ORDER FORM OR OTHERWISE (WHETHER ORAL, TYPED, WRITTEN OR PRINTED) SHALL BE NULL AND VOID AND OF NO EFFECT, EVEN IF NOT EXPRESSLY OBJECTED TO BY SELLER.

2 ACCEPTANCE AND CONFIRMATION OF ORDER - ANY ORDER OF THE BUYER MAY BE ACCEPTED BY SELLER IN WHOLE OR IN PART, A PARTIAL ACCEPTANCE BY SELLER OF ANY SUCH ORDER SHALL NOT CONSTITUTE AN ACCEPTANCE OF ANY OTHER PART OF THE ORDER. NO ORDER OF THE BUYER WILL BE BINDING UPON SELLER UNLESS ACCEPTED BY SELLER ON SELLER'S FORM OF ORDER CONFIRMATION, SIGNED BY AN OFFICER OR EMPLOYEE OF SELLER DULY AUTHORIZED TO SIGN ON BEHALF OF SELLER, AND THEN ONLY AS AND TO THE EXTENT SET FORTH IN SUCH ORDER CONFIRMATION. ANY TERM, CONDITION OR PROVISION SET FORTH IN SELLER'S ORDER CONFIRMATION WHICH IS NOT OBJECTED TO BY THE BUYER IN WRITING WITHIN TEN DAYS AFTER THE DATE THEREOF WILL CONCLUSIVELY BE DEEMED TO HAVE BEEN ACCEPTED BY THE BUYER. SELLER'S ORDER CONFIRMATION SHALL BE CONTROLLING REGARDING THE MERCHANDISE AND QUANTITIES SOLD OR REQUIRED TO BE SOLD BY SELLER TO THE BUYER. EVERY ORDER OF THE BUYER WILL BE BINDING ON THE BUYER UNLESS AND UNTIL IT IS REJECTED IN WRITING BY SELLER, AND MAY NOT BE CANCELLED, WITHDRAWN OR MODIFIED BY THE BUYER, HOWEVER, IN THE EVENT OF A PARTIAL ACCEPTANCE BY SELLER, THE BUYER WILL NO LONGER BE BOUND WITH RESPECT TO THE PARTS OF THE ORDER NOT ACCEPTED BY SELLER.

3 PRICES - UNLESS OTHERWISE SPECIFICALLY AGREED BY SELLER IN WRITING, THE BUYER WILL PAY THE PRICES OF SELLER FOR THE MERCHANDISE IN EFFECT AT THE TIME OF SHIPMENT AND ALL PRICES QUOTED OR INVOICED BY SELLER ARE FOR DELIVERY EX-FACTORY, EXCLUDING TRANSPORTATION AND SHIPPING CHARGES, TAXES, FEES AND CUSTOM DUTIES. SELLER'S PRICES MAY, AT SELLER'S OPTION, BE INCREASED, AFTER SELLER'S ACCEPTANCE OF THE BUYER'S ORDER, TO REFLECT ANY INCREASES IN SELLER'S MATERIALS, TAXES, FEES AND CUSTOMS DUTIES, LABOR OR OTHER COSTS.

4 DISCOUNTS AND ALLOWANCES - EXCEPT AS EXPRESSLY PROVIDED IN SELLER'S ORDER CONFIRMATION, THE BUYER WILL NOT BE ENTITLED TO ANY DISCOUNT, ALLOWANCE, COMMISSION OR REBATE OF ANY KIND, DIRECTLY OR INDIRECTLY. ANY DISCOUNT GRANTED BY SELLER FOR PREPAYMENT OF AN INVOICE WILL BE ALLOWED ONLY IF THE FULL AMOUNT SPECIFIED IN THE INVOICE IS RECEIVED BY SELLER ON OR BEFORE THE DUE DATE OF THE INVOICE.

5 TIME OF DELIVERY - ANY DELIVERY DATES SPECIFIED BY SELLER WILL BE DEEMED TO BE ESTIMATES ONLY, UNLESS SPECIFIC COMMITMENTS ARE MADE IN WRITING BY SELLER. IN NO EVENT IS THE TIME OF DELIVERY OF THE MERCHANDISE OF THE ESSENCE. SELLER RESERVES THE RIGHT TO CANCEL, IN WHOLE OR IN PART, OR TO SUSPEND OR DELAY, IN WHOLE OR IN PART, ANY ORDERS (DUE TO (I) THE UNUSUALLY LARGE SIZE OF AN ORDER (II) EXIGENCIES OF SELLER'S PRODUCTION OR DELIVERY SCHEDULE, (III) SHORTAGES OR OR FAILURES OF SELLER'S SUPPLIERS TO DELIVER, OR DELAYS OF SELLER'S SUPPLIERS IN DELIVERING MATERIALS, (IV) WORK STOPPAGES OR OTHER LABOR TROUBLES, (V) ACTS OF GOD OR (VI) ANY EVENT IN THE NATURE OF FORCE MAJEURE OR BEYOND SELLER'S CONTROL). DELIVERY DATES WILL BE EXTENDED BY THE AMOUNT OF ANY ADDITIONAL TIME REQUIRED BY SELLER TO MAKE DELIVERY AS A RESULT OF ANY SUCH CONDITION OR EVENT OR ANY CHANGE IN THE CONTRACT. SELLER ALSO RESERVES THE RIGHT TO DISCONTINUE PARTICULAR MERCHANDISE OR LINES OF PRODUCTS, OR TO SUBSTITUTE OTHER MERCHANDISE OR LINES, IN RESPONSE TO PRODUCTION AND MARKET REQUIREMENTS AND DEMANDS. THE BUYER WAIVES ANY AND ALL CLAIMS AND RIGHTS WHICH THE BUYER MIGHT OTHERWISE HAVE ARISING OUT OF OR IN CONNECTION WITH OR RELATING TO ANY DELAY IN DELIVERY OF THE MERCHANDISE FOR ANY REASON WHATSOEVER, OR ANY FAILURE OF SELLER TO DELIVER BY REASON OF THE EXERCISE BY SELLER OF ANY OF ITS RIGHTS PURSUANT TO THESE GENERAL CONDITIONS OF SALE, INCLUDING, WITHOUT LIMITATION, ANY AND ALL CLAIMS FOR OR RIGHTS TO DIRECT, INDIRECT, INCIDENTAL, CONSEQUENTIAL OR OTHER DAMAGES OR COMPENSATION, AND ANY AND ALL RIGHTS TO TERMINATE OR CANCEL THE CONTRACT, IN WHOLE OR IN PART.

6 TERMS OF SALE, RISK OF LOSS - BUYER WILL TAKE DELIVERY OF THE MERCHANDISE AT THE SELLER'S PREMISES ("EX-FACTORY"), UNLESS OTHERWISE SPECIFICALLY AGREED BY SELLER IN WRITING. (I) ALL RISK OF LOSS OR DAMAGE TO THE MERCHANDISE SHALL PASS TO THE BUYER UPON DELIVERY OF THE MERCHANDISE BY SELLER TO A CARRIER, (II) SELLER SHALL NOT BE REQUIRED TO PROCURE INSURANCE TO COVER THE MERCHANDISE DURING TRANSPORTATION (IN SHIPMENT); (II) ANY SHIPPING ARRANGEMENTS MADE BY

SELLER WITH CARRIERS OR FORWARDING AGENTS AT THE BUYER'S REQUEST SHALL BE MADE SOLELY ON THE BUYER'S BEHALF AND AT THE BUYER'S SOLE COST AND RISK; (IV) ANY AGENT APPOINTED FOR SUCH SHIPMENT SHALL BE SOLELY THE BUYER'S AGENT FOR ALL PURPOSES; (V) THE BUYER SHALL BE RESPONSIBLE FOR ALL THE UNLOADING AND RECEIPT OF THE MERCHANDISE AT ITS DESTINATION, AND (VI) ANY CLAIM FOR LOSS OR DAMAGE SHALL BE MADE BY THE BUYER SOLELY AGAINST THE CARRIER.

7 TERMS OF PAYMENT - THE BUYER SHALL MAKE ALL PAYMENTS IN ACCORDANCE WITH THE PROVISIONS OF THE CONTRACT, NOTWITHSTANDING ANY CLAIM FOR ANY ALLEGED DEFECT, FAULT OR IRREGULARITY IN THE MERCHANDISE UNLESS OTHERWISE SPECIFICALLY AGREED BY SELLER IN WRITING. PAYMENT BY THE BUYER IS DUE UPON RECEIPT OF SELLER'S INVOICE. PAYMENT FOR ALL MERCHANDISE SPECIFIED IN THE INVOICE SHALL BE MADE, IN THE CURRENCY STATED IN THE INVOICE, AT SELLER'S PLACE OF BUSINESS OR AT SUCH OTHER PLACE AS SELLER MAY SPECIFY BY NOTICE IN WRITING TO THE BUYER. THE ACCEPTANCE BY SELLER OF ANY CHECK, DRAFT, PROMISSORY NOTE OR OTHER INSTRUMENT SHALL NOT CONSTITUTE A CHANGE IN OR NOVATION OF THE CONTRACT OR AN AGREEMENT BY SELLER THAT PAYMENT MAY BE MADE AT THE PLACE WHERE SUCH CHECK, DRAFT, PROMISSORY NOTE OR OTHER INSTRUMENT IS DRAWN, ISSUED OR PAYABLE. MOREOVER, ACCEPTANCE BY SELLER OF ANY CHECK, DRAFT, PROMISSORY NOTE OR OTHER INSTRUMENT WILL NOT CONSTITUTE PAYMENT UNTIL SELLER HAS COLLECTED THE FULL AMOUNT IN CASH AT SELLER'S PLACE OF BUSINESS. IN THE EVENT OF ANY DELAY IN PAYMENT, SELLER SHALL HAVE THE RIGHT TO SUSPEND DELIVERIES AND MAY, AT ITS OPTION, (I) REQUIRE IMMEDIATE PAYMENT OF ALL OR ANY PART OF ANY AND ALL SUMS OWED BY THE BUYER, IRRESPECTIVE OF ANY CREDIT TERMS PREVIOUSLY AGREED TO, AND (II) TERMINATE THE CONTRACT (AS WELL AS ANY AND ALL OTHER CONTRACTS WITH THE BUYER) IN WHOLE OR IN PART, AND HOLD THE BUYER LIABLE FOR DAMAGES. IN THE EVENT SELLER DOES NOT RECEIVE ANY PAYMENT BY THE DUE DATE, THE BUYER SHALL PAY TO SELLER INTEREST ON THE UNPAID AMOUNT, FROM THE DUE DATE TO THE DATE PAYMENT IS ACTUALLY RECEIVED BY SELLER, AT A FLOATING PER ANNUM RATE OF INTEREST EQUAL TO FIVE PERCENT ABOVE THE OFFICIAL RATE OF DISCOUNT OF THE BANK OF ITALY, ROME, ITALY. SELLER'S RIGHT TO SUCH INTEREST SHALL BE IN ADDITION TO, AND NOT IN LIEU OF, ALL OTHER RIGHTS AND REMEDIES ARISING BY REASON OF SUCH NONPAYMENT. IN THE EVENT OF ANY DELAY IN PAYMENT, SELLER MAY, AT ITS OPTION, AMONG OTHER THINGS, CANCEL OR TERMINATE THE CONTRACT, IN WHOLE OR IN PART, AND HOLD THE BUYER LIABLE FOR DAMAGE. ANY PAYMENT RECEIVED BY SELLER MAY BE APPLIED TO ANY OUTSTANDING BALANCE OWED BY THE BUYER TO SELLER. AS SELLER, IN ITS SOLE DISCRETION, MAY DETERMINE, ANY INSTRUCTIONS OF THE BUYER TO THE CONTRARY NOTWITHSTANDING.

(A) IRRESPECTIVE OF ANY PAYMENT OR CREDIT TERMS SPECIFIED OR AGREED TO BY SELLER, SELLER MAY IN ITS SOLE DISCRETION, AT ANY TIME AND FROM TIME TO TIME, REQUIRE PAYMENT IN CASH BEFORE SHIPMENT OF ANY OR ALL OF THE MERCHANDISE, OR REQUIRE PAYMENT IN ADVANCE OF ANY OR ALL AMOUNTS DUE OR TO BECOME DUE UNDER THE CONTRACT. IF SELLER BELIEVES IN GOOD FAITH THAT THE BUYER'S ABILITY TO MAKE THE PAYMENTS REQUIRED BY THE CONTRACT IS OR MAY BECOME IMPAIRED, SELLER MAY IN ITS SOLE DISCRETION, CANCEL OR TERMINATE THE CONTRACT, IN WHOLE OR IN PART, THE BUYER REMAINING LIABLE TO PAY FOR ANY MERCHANDISE ALREADY SHIPPED.

8 WARRANTIES, COLOR, TONE AND SHADE VARIATIONS (A) EXCEPT FOR SUCH EXPRESS WRITTEN WARRANTIES AS MAY BE MADE BY SELLER TO THE BUYER, SELLER MAKES NO WARRANTY OR REPRESENTATION, EXPRESS OR IMPLIED, WITH RESPECT TO THE MERCHANDISE, INCLUDING, WITHOUT LIMITATION, ANY WARRANTY OF MERCHANTABILITY OR FITNESS FOR ANY PARTICULAR PURPOSE - UNDER NO CIRCUMSTANCES DOES SELLER MAKE, OR SHALL SELLER BE DEEMED TO HAVE MADE, ANY WARRANTY OR REPRESENTATION, EXPRESS OR IMPLIED, WITH RESPECT TO THE UNIFORMITY OF THE COLOR, TONE OR SHADE OF THE MERCHANDISE OR THE CONFORMITY OF THE MERCHANDISE TO THE COLOR, TONE OR SHADE OF ANY SAMPLE, IN PARTICULAR, AND WITHOUT LIMITATION, UNDER NO CIRCUMSTANCES DOES SELLER MAKE, OR SHALL SELLER BE DEEMED TO HAVE MADE, ANY SUCH WARRANTY OR REPRESENTATION, OR ANY OTHER WARRANTY OR REPRESENTATION, EXPRESS OR IMPLIED, BY REASON OF ANY STATEMENT, DESCRIPTION OR ILLUSTRATION IN ANY BROCHURE OR OTHER LITERATURE OR BY REASON OF HAVING FURNISHED A SAMPLE OF ANY MERCHANDISE. MOREOVER, ANY WRITTEN WARRANTY MADE BY SELLER TO BUYER WITH RESPECT TO ANY MERCHANDISE IS APPLIED ONLY TO MERCHANDISE WHICH IS OF FIRST QUALITY, AND DOES NOT APPLY TO SECOND OR LESSER QUALITY MERCHANDISE, AND (II) IS SUBJECT TO A TOLERANCE OF APPROXIMATELY FIVE PERCENT IN THE EVENT OF ANY BREACH OF WARRANTY, SELLER MAY, AT ITS ELECTION, EITHER (I) REPLACE THE MERCHANDISE AFFECTED OR (II) CANCEL OR TERMINATE THE CONTRACT, IN WHOLE OR IN PART, WITHOUT ANY OBLIGATION TO REPLACE ANY MERCHANDISE. THE BUYER WAIVES ANY AND ALL OTHER CLAIMS AND RIGHTS WHICH THE BUYER MIGHT OTHERWISE HAVE ARISING OUT OF OR IN CONNECTION WITH OR RELATING TO ANY SUCH BREACH OF WARRANTY OR ARISING OUT OF OR IN CONNECTION WITH OR RELATING TO ANY DEFECT, FAULT OR IRREGULARITY IN THE MERCHANDISE, INCLUDING, WITHOUT LIMITATION, ANY AND ALL CLAIMS FOR OR RIGHTS TO DIRECT, INDIRECT, INCIDENTAL, CONSEQUENTIAL OR OTHER COMPENSATION OR DAMAGES, AND ANY AND ALL RIGHTS TO TERMINATE OR CANCEL THE CONTRACT, IN WHOLE OR IN PART.

(B) THE BUYER TAKES FULL AND COMPLETE RESPONSIBILITY FOR ASCERTAINING WHETHER THE MERCHANDISE MEET THE REQUIREMENTS OF OR IS SUITABLE FOR THE BUYER'S INTENDED USE, REGARDLESS OF ANY SUGGESTIONS OR DIRECTIONS GIVEN BY SELLER WITH RESPECT TO THE MERCHANDISE OR THE USE THEREOF.

(C) THE BUYER ACKNOWLEDGES THAT VARIATIONS IN COLOR, TONE AND SHADES OF THE MERCHANDISE ARE INHERENT AND UNAVOIDABLE. THAT SELLER DOES NOT WARRANT UNIFORMITY IN COLOR, TONE OR SHADE OF THE MERCHANDISE AND THAT THE MERCHANDISE MAY NOT MATCH THE COLOR, TONE OR SHADE OF ANY SAMPLE.

(D) THE BUYER SHALL NOT TEST OR HAVE ANY TEST PERFORMED ON THE MERCHANDISE UNLESS THE BUYER HAS PREVIOUSLY ADVISED SELLER OF THE PROPOSED TEST IN WRITING, SPECIFYING THE TIME AND PLACE OF THE PROPOSED TEST AND THE IDENTITY OF THE PERSON PROPOSED TO PERFORM SUCH TEST, AND AFFORDED SELLER A SUFFICIENT OPPORTUNITY TO PARTICIPATE IN THE PROPOSED TEST TO SUCH EXTENT AS SELLER DEEMS ADVISABLE. ANY TEST PERFORMED IN THE ABSENCE OF SUCH ADVICE AND PARTICIPATION SHALL BE OF NO EFFECT WITH RESPECT TO ANY CLAIM OR RIGHT OF THE BUYER.

9 TITLE TO AND SECURITY INTEREST IN MERCHANDISE - UNTIL SELLER COLLECTS IN FULL ALL AMOUNTS REQUIRED TO BE PAID BY THE BUYER FOR THE MERCHANDISE, AS WELL AS ANY AND ALL OTHER AMOUNTS OWED BY THE BUYER TO SELLER, SELLER RETAINS TITLE TO THE MERCHANDISE, IN ACCORDANCE WITH ARTICLE 1583 OF THE ITALIAN CIVIL CODE, AND SELLER SHALL HAVE A SECURITY INTEREST IN THE MERCHANDISE, UNDER THE UNIFORM COMMERCIAL CODE AS IN EFFECT IN THE UNITED STATES, TO SECURE THE PAYMENT OF ALL SUCH AMOUNTS. BY PLACING AN ORDER WITH SELLER THE BUYER APPOINTS SELLER AS ITS ATTORNEY-IN-FACT TO SIGN AND FILE ANY AND ALL FINANCING STATEMENTS WITH RESPECT TO SUCH SECURITY INTEREST WHICH SELLER MAY DEEM NECESSARY OR DESIRABLE, OR TO FILE SUCH FINANCING STATEMENTS WITHOUT THE SIGNATURE OF THE BUYER TO THE EXTENT PERMITTED BY LAW. THE BUYER SHALL, AT THE REQUEST OF SELLER, EXECUTE ANY AND ALL FINANCING STATEMENTS AND OTHER DOCUMENTS WHICH THE SELLER MAY REQUEST TO PERFECT OR EVIDENCE SUCH TITLE AND SUCH SECURITY INTEREST.

10 COSTS OF COLLECTION - IN THE EVENT SELLER RETAINS A COLLECTION AGENCY TO COLLECT ANY AMOUNT OWED BY THE BUYER, OR INSTITUTES PROCEEDINGS TO COLLECT SUCH AMOUNT OR TO ENFORCE ANY RIGHT UNDER THE CONTRACT, INCLUDING ENFORCEMENT OF ANY SECURITY INTEREST GRANTED TO SELLER, THE BUYER SHALL REIMBURSE SELLER FOR ALL COLLECTION AGENCY FEES AND COSTS, OR ALL COSTS INCURRED IN SUCH LEGAL PROCEEDINGS, INCLUDING REASONABLE ATTORNEY'S FEES.

11 CLAIMS - (A) ANY CLAIM BY THE BUYER OF ANY AND EVERY KIND MUST BE MADE IN A WRITING DISPATCHED TO SELLER, BY REGISTERED MAIL, RETURN RECEIPT REQUESTED, NOT LATER THAN THIRTY DAYS FROM THE DATE OF SHIPMENT OF THE MERCHANDISE WITH RESPECT TO WHICH THE CLAIM IS MADE. FAILURE TO MAKE ANY CLAIM IN SUCH MANNER OF WITHIN SUCH THIRTY DAY PERIOD SHALL CONSTITUTE AN IRREVOCABLE ACCEPTANCE OF THE MERCHANDISE AND AN ADMISSION BY THE BUYER THAT THE MERCHANDISE FULLY COMPLY WITH ALL THE TERMS, CONDITIONS AND SPECIFICATIONS OF THE CONTRACT.

(B) THE BUYER MAY NOT ACCEPT ONLY A PART OF THE MERCHANDISE DELIVERED. ACCEPTANCE OF ANY PART OF THE MERCHANDISE ORDERED SHALL CONSTITUTE ACCEPTANCE OF ALL OF THE ORDERED MERCHANDISE, WHETHER OR NOT THE MERCHANDISE IS ALL TENDERED IN ONE SHIPMENT.

(C) NO MERCHANDISE MAY BE RETURNED BY THE BUYER WITHOUT THE PRIOR WRITTEN AUTHORIZATION OF THE SELLER. ALL RETURNS SHALL BE SUBJECT TO VERIFICATION ON ARRIVAL AT THE LOCATION SPECIFIED IN SUCH WRITTEN AUTHORIZATION, FOR THE RETURN OF THE MERCHANDISE.

12 PROPRIETARY RIGHTS - ALL RIGHTS IN DESIGNS, TRADE NAMES, TRADEMARKS AND COPYRIGHTS OF SELLER USED ON OR IN CONNECTION WITH THE MERCHANDISE ARE PROPRIETARY AND SHALL REMAIN THE EXCLUSIVE PROPERTY OF SELLER, AND THE BUYER SHALL HAVE NO RIGHT OR INTEREST THEREIN OR WITH RESPECT THERETO. THE BUYER SHALL NOT REPRODUCE OR SIMULATE, OR CAUSE OR ALLOW ANYONE TO REPRODUCE OR SIMULATE, EITHER DIRECTLY OR INDIRECTLY, ANY SUCH DESIGN, TRADE NAME, TRADEMARK OR COPYRIGHT.

13 TERMINATION OF THE CONTRACT - SELLER SHALL HAVE THE RIGHT TO CANCEL OR TERMINATE THE CONTRACT, IN WHOLE OR IN PART, (I) WITHIN ONE HUNDRED TWENTY DAYS FROM THE DATE OF SELLER'S ORDER CONFIRMATION, IN SELLER'S SOLE DISCRETION, OR (II) AT ANY TIME, IN THE EVENT SELLER EXPERIENCES DIFFICULTIES IN OBTAINING REGULAR OR SUFFICIENT SUPPLIES OF MATERIALS. THE BUYER WAIVES ANY AND ALL CLAIMS AND RIGHTS WHICH THE BUYER OTHERWISE MIGHT HAVE, INCLUDING, WITHOUT LIMITATION, ANY AND ALL CLAIMS FOR OR RIGHTS TO DIRECT, INDIRECT, INCIDENTAL, CONSEQUENTIAL OR OTHER DAMAGES, OR COMPENSATION, ARISING OUT OF OR IN CONNECTION WITH OR RELATING TO ANY CANCELLATION OR TERMINATION, IN WHOLE OR IN PART, PURSUANT TO THIS OR ANY OTHER PARAGRAPH OF THESE GENERAL CONDITIONS OF SALE, OF THE CONTRACT OR ANY OTHER CONTRACT BETWEEN SELLER AND THE BUYER.

14 APPLICABLE LAW - THE CONTRACT SHALL BE GOVERNED BY AND CONSTRUED IN ACCORDANCE WITH THE LAWS OF THE REPUBLIC OF ITALY, WITHOUT GIVING EFFECT TO CONFLICT OF LAWS PRINCIPLES, EXCEPT THAT (A) IF THE SELLER DECIDES TO SUE THE BUYER IN THE UNITED STATES AS INDICATED IN PARAGRAPH 12, THE LAW OF THE STATE WHERE THE ACTION IS PROSECUTED WILL GOVERN, AND (B) THE RIGHTS OF SELLER PURSUANT TO ITS SECURITY INTEREST IN THE MERCHANDISE SHALL BE GOVERNED BY AND CONSTRUED IN ACCORDANCE WITH THE UNIFORM COMMERCIAL CODE AS IN EFFECT IN THE UNITED STATES.

15 JURISDICTION - ALL LITIGATION ARISING OUT OF OR IN CONNECTION WITH THE CONTRACT OR THE MERCHANDISE SHALL BE CONDUCTED IN MODENA, ITALY, EXCEPT THAT SELLER, AT ITS OPTION, MAY COMMERCE AND PROSECUTE SUCH LITIGATION IN ANY JURISDICTION IN WHICH THE BUYER MAY BE LOCATED OR FOUND OR MAY DO OR TRANSACT ANY BUSINESS. THE BUYER CONSENTS TO THE JURISDICTION OF THE COURTS OF MODENA, ITALY, AND AGREES THAT ANY AND ALL PROCESS MAY BE SERVED UPON THE BUYER OUTSIDE OF MODENA, ITALY WITH THE SAME FORCE AND EFFECT AS IF SUCH SERVICE HAD BEEN MADE IN REGGIO EMILIA, ITALY.

16 MODIFICATIONS - THE CONTRACT CANNOT BE ORALLY CHANGED, MODIFIED, AMENDED OR DISCHARGED, IN WHOLE OR IN PART. ANY CHANGE, MODIFICATION, AMENDMENT OR DISCHARGE TO BE EFFECTIVE, MUST BE IN WRITING, SIGNED BY AN OFFICER OR EMPLOYEE OF SELLER DULY AUTHORIZED TO SIGN ON BEHALF OF SELLER.

LE INFORMAZIONI CONTENUTE NEL PRESENTE CATALOGO SONO IL PIÙ POSSIBILE ESATTE, MA NON SONO DA RITENERSI LEGALMENTE VINCOLANTI. PER ESIGENZE DI PRODUZIONE CI RISERVIAMO IL DIRITTO DI APPORTARE EVENTUALI MODIFICHE CHE SI RENDONO NECESSARIE. COLORI E MISURE POTREBBERO ESSERE SOGGETTI A VARIAZIONI. I COLORI IN CATALOGO SI AVVICINANO QUANTO PIÙ POSSIBILE A QUELLI REALI NEI LIMITI CONSENTITI DAI PROCESSI DI STAMPA. QUESTO CATALOGO ANNULLA E SOSTITUISCE OGNI PRECEDENTE VERSIONE. GENNAIO 2016.

THE INFORMATION CONTAINED IN THIS CATALOGUE IS CORRECT TO THE BEST OF OUR KNOWLEDGE, BUT IS NOT TO BE CONSTRUED AS LEGALLY BINDING.

WE RESERVE THE RIGHT TO MAKE CHANGE AS AND WHEN PRODUCTION REQUIRE THEM NECESSARY. COLOURS AND SIZES ARE SUBJECT TO THE USUAL VARIATION EXPECTED IN CERAMIC PRODUCTS. COLOURS SHOWN ARE AS CLOSE TO THE REAL AS THE LIMITATION OF THE PRINTING PROCESS WILL ALLOW. THIS CATALOGUE REPLACES THE PREVIOUS ONES. JANUARY 2016.

LES INFORMATIONS CONTENUES DANS LE PRÉSENT CATALOGUE SONT LE PLUS JUSTE POSSIBLE, MAIS NE SONT PAS À PRENDRE EN CONSIDÉRATION LÉGALEMENT.

POUR DES CONTRAINTES LIÉES À LA PRODUCTION, NOUS NOUS RÉSERVONS LE DROIT D'APPORTER D'ÉVENTUELS CHANGEMENTS QUI PEUVENT S'AVÉRER NECESSAIRES. COULEURS, DIMENSIONS PEUVENT VARIÉES SUITE À DES MODIFICATIONS. LES COULEURS SONT LE PLUS PROCHE POSSIBLE DE LA RÉALITÉ DANS LA LIMITE DES PROCÉDES D'IMPRESSION. CE CATALOGUE ANNULE ET REMPLACE LA VERSION ANTÉCÉDENTE 4 JANVIER 2016.

INFORMATIONEN ENTHALTEN IN DIESEM KATALOG SIND SO VIEL WIE MÖGLICH EXAKT, ABER SIE SIND NICHT GESETZLICH VERBINDLICH. WEGEN PRODUKTIONSBEDÜRFNISSE KÖNNEN WIR EINIGE ERFORDERLICHE ABÄNDERUNGEN VORNEHMEN. FARBEN UND MAE KÖNNEN ABÄNDERUNGEN ERLEIDEN, DIE FARBEN IN DEM KATALOG SIND SO VIEL WIE MÖGLICH REALISTISCH, ABER MIT STENPELBSCHRÄNKUNGEN. DER KATALOG ANNULLIERT UND TAUSCHT DIE VORIGE DARSTELLUNG AUS.

EPOCA CERAMICHE SI RISERVA IL DIRITTO DI APPORTARE IN QUALSIASI MOMENTO MODIFICHE O VARIAZIONI AI PRODOTTI PRESENTI IN QUESTO CATALOGO.

EPOCA CERAMICHE RESERVES THE RIGHT TO CHANGE THE PRODUCTS PRESENTED IN THIS CATALOGUE AT ANY TIME.

EPOCA CERAMICHE SE RESERVE À TOUT MOMENT LA FACULTE D'APPORTER DES MODIFICATIONS OU DES VARIATIONS SUR LES PRODUITS PRESENTES SUR CE CATALOGUE.

DIE FIRMA EPOCA CERAMICHE BEHALT SICH DAS RECHT VOR, JEDERZEIT ÄNDERUNGEN AN DEN IN KATALOG AUFGEFÜHRTEN PRODUKTEN VORZUNEHMEN.

NON SI ACCETTANO RECLAMI PER I MATERIALI POSTI IN OPERA.

NO COMPLAINTS WILL BE ACCEPTED FOR MATERIAL AFTER LAYING.

AUCUNE RECLAMATION CONCERNANT MATARIEL POSÉ NE SERA PRISE EN CONSIDÉRATION.

ES WIRD KEINE REKLAMATION FUER SCHON VERLAGTES MATERIAL ANGENOMMEN.

